

Fourth Biennial
Convention

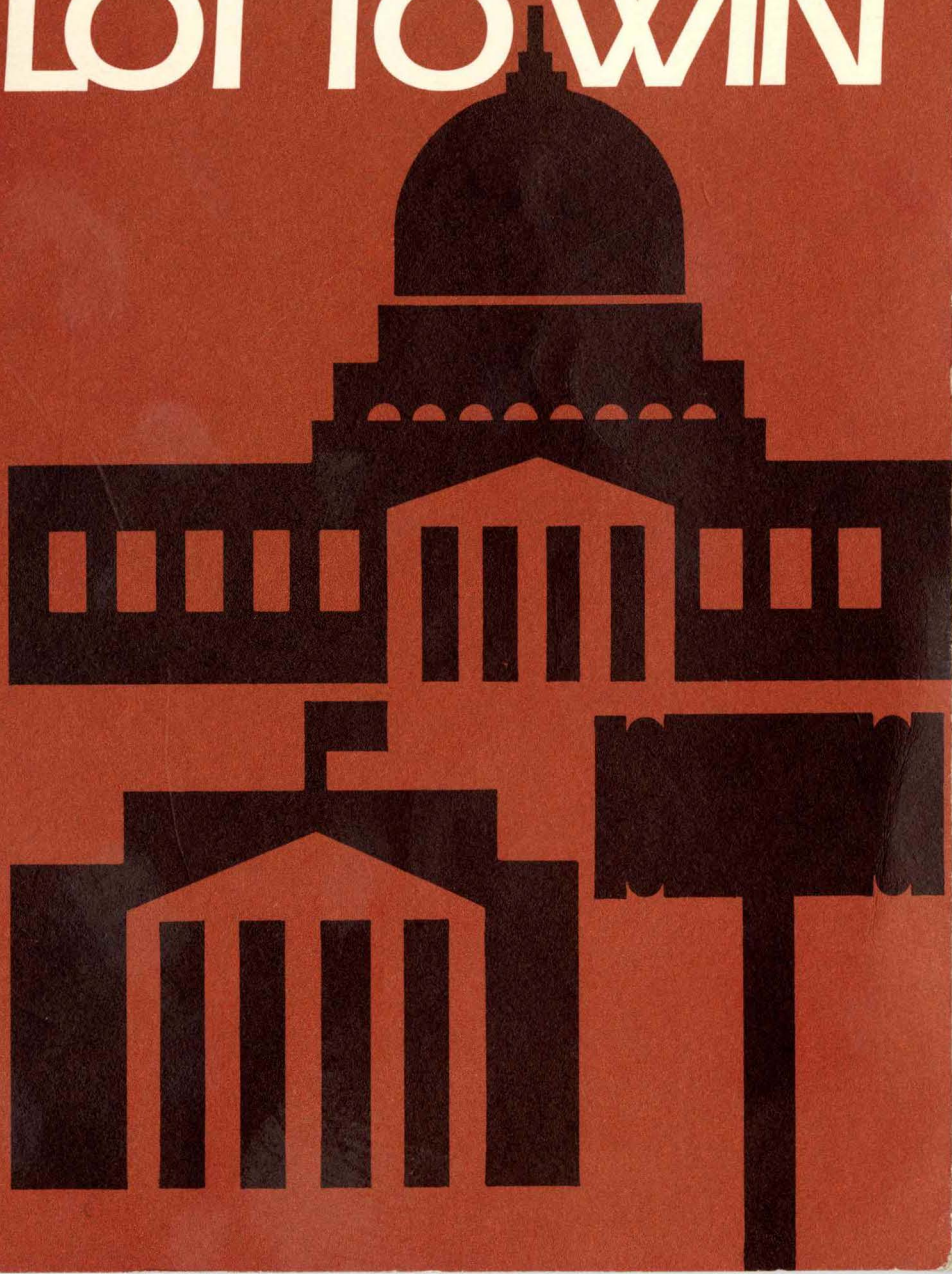
July 13-
15, 1979

Cincinnati,
Ohio

Handwritten signature
2652

National
Women's
Political
Caucus

WE HAVE A LOT TO WIN



6665-5999
/202

The Officers, Board Members and Staff
of
The National Women's Political Caucus
salute

Jane Pierson McMichael
(former NWPC executive Director)

and

Lael Stegall
(former NWPC development director)
for their dedication to
the cause of equality for all

Thank you
for a night
of
wonderful
music
and
the
National
Women's
Political
Caucus

Table of Contents

Welcome, Convention Chair.	1
Greetings from the NWPC Chair.	2
NWPC Makes Headlines, A Press Report.	4
NWPC History.	5
NWPC Program Areas	
Membership.	7
State Chair List.	8
Finance.	10
Democratic Women's Task Force.	15
Republican Women's Task Force.	16
Legislative Committee.	17
Judicial Appointments Project.	18
Coalition for Women's Appointments.	19
Women's Political Times.	20
Convention Information	
Convention Schedule.	21
Plenary Session Agenda.	26
Convention Center Layout.	27
Seminar and Workshops.	28
General Information.	31
Convention Committee.	32
NWPC ERA Fund.	33
NWPC Support Committee.	35
NWPC Administration and Structure.	36
NWPC Staff Report.	38
Advertisers	

Welcome to Cincinnati



Cathie Hartnett

Dear Friends;

Welcome, everyone, to Cincinnati and the fourth biennial convention of the National Women's Political Caucus.

Yes, the past months have been hectic. The myriad of details that are essential to produce an event of this proportion sometimes seemed overwhelming. But with the help of so many of you, we have achieved our goal—a coming together for each of us to share experiences, to exchange information, to learn from stimulating resources—and to have a good time with women from all parts of the country.

This convention is an unique opportunity to sharpen your political skills, to develop tools to aid your Caucus's growth, to learn more about the critical issues facing women—and thus every American—and to work toward the common goals of power for all feminists and feminists in all places of power.

I want to take this opportunity to salute the many people who have worked to make this convention the best in our history . . . the tri-state area, Ohio, Kentucky and Indiana Caucus members, the Caucus staff, and the volunteer assistance from Caucus members everywhere has made the convention committee's job infinitely easier.

Thank you all.

When you return home after this meeting, I hope you will feel renewed and re-energized, ready to continue your crucial work in seeing that women are in the Constitution, in the Congress and in your local and state offices.

We Have A Lot to Win!

Cathie Hartnett
Convention Chair

Greetings from The Chair

With my
love and
respect
for you
Millie Jeffrey



Millie Jeffrey

Strong, bold, energetic!

That's how the members of the National Women's Political Caucus will enter the decade of the 1980's as we continue our pursuit for equality and power for women.

And as we face the challenges of the future, we reflect briefly on the past. In our hearts are the memories of those early dauntless leaders—Harriett Tubman, Susan B. Anthony, Margaret Sanger, Alice Paul, Mother Jones and many more whose militant determination won us victories which paved the way for today's successes.

Also in celebrating our birthday here in Cincinnati, we can be proud that we are closely adhering to goals that were set for us eight years ago by our founding mothers—to end sexism, racism, poverty, and violence in our society.

A more recent memory is the unprecedented National Women's Conference in Houston two years ago... the most representative gathering of women ever assembled and a beautiful panoply to feminism and womanhood. A plan of action was adopted with overwhelming support that has become the constitution for the women's movement.

The spirit of Houston lives on. On a hot, muggy Washington day last June 9, the first anniversary of the death of Alice Paul, over 100,000 women, men and children marched on the Capitol to put women in the Constitution... after 200 years of exclusion.

That march was the kick-off for one of the most extraordinarily unified and intensive lobbying campaigns ever carried out—for the extension of the ERA ratification period. With support from labor, religious, civil rights, environmental, health, and other public interest as well as women's groups. Congress, despite heavy opposition, responded and extended the deadline to June 20, 1982.

In San Jose in 1977, ratification of ERA was made the number one priority for the NWPC. During the past two years, Caucus efforts to carry out this mandate have blossomed. With the assistance of the newly created NWPC ERA Fund state and local caucuses gained a sophistication regarding political techniques, targeted districts, recruited candidates and managed campaigns for carefully selected pro-ERA supporters. Contributing over \$350,000 in money and technical support, we won 75 percent of our races.

While impressive, unfortunately, the increase was not enough to overcome the political chicanery of the few wheeler-dealers who trade off cheap favors for our basic rights.

ERA is still a priority for us. As long as that 38th state remains unratified, we are an unratified nation. We will develop a national focus and mobilize for 1980 electoral victories.

The appointed arena has not been overlooked by the Caucus. By initiating the Coalition for Women's Appointments, we won dozens of posts for women to top policy positions in the Carter administration, not only in Washington, but also in regional offices. Two of the Caucus founders, Roxanne Conlin and Virginia Dill McCarty were the first women ever to be named U.S. Attorneys in Iowa and Indiana, respectively.

With our appointment successes in administration spots, we then took on the U.S. judicial system, an exclusive, all-white, all-male sexist bastion. In 200 years only 24 women have served on the federal bench. Systematically we attacked this area through the

NWPC Judicial Appointments Project to help women learn the ropes and get through the nominating process. We've opened the door a crack. While many women are being nominated and appointed, more are being overlooked. We are committed, however, to enhancing the quality of judges for all Americans by making the courts representative of the diversity of our country through the appointment of women and minorities.

In the midst of our successes, naturally, we are bound to experience some set-backs. But one of the most debilitating to feminists around the country was the summary dismissal of Bella Abzug, chair of the National Advisory Committee for Women, by President Carter. Twenty-four of the 40 members of that Committee resigned in support of Bella and Co-Chair Carmen Delgado Votaw, and to protest the presidential dictum that the Committee should not speak out on the economy, the budget and inflation programs as they impact women. Bella has always been a controversial woman... but she has always been her own woman and our own woman. She has stood for change and for issues that affect all humanity regardless of the consequences. And we salute her.

We can be proud, too, of the NWPC legislative program, of the best feminist political newspaper in the country—**WOMEN'S POLITICAL TIMES**—and of the advances made in improving our internal operations in the organization. A new membership brochure and organizing manual will help new and seasoned caucuses grow and be even more effective.

In these two years we have built a team... delegating responsibilities, sharing leadership and returning decisions on policy and programs to the members.

We have been blessed with a magnificent staff and with hundreds of capable volunteers.

These past two years have been exciting ones for me, not only for our accomplishments but most of all for having the opportunity to work with you—so many, dedicated, talented women. Wherever I go, Caucus women inspire and sustain me. You are truly marvelous, bright, able, practical, idealist and caring. You nurture each other in a sharing and loving way.

Thank you all.

We face 1980 strong, well prepared and resilient.

Millie Jeffrey
NWPC Chair

Let's Keep the
Momentum Going!
Millie

27 000000 27

NWPC Makes Headlines

Her Goal: Women In Politics
By Judy J. Newmark
Of the Post-Dispatch Staff

New Success for Women: More Seek Elective Office
in part

Democrats Move To Give Women Convention Seats

Five learned so well that they got elected
Women's political class

Caucus to Map Tactics On Missouri ERA Fight

Republican Women Take 62 New Legislative Seats

Wide Search Is On for U.S. Judges

Get Women Candidates for

Ellen Malcolm
NWPC Press Coordinator

When the NWPC talks people listen. The American public has been hearing a lot in the last two years from the NWPC. Caucus members have been making headlines nationwide informing voters that women are serious about gaining political power.

Getting the story out has been the job of the Public Information Committee chaired by Virginia Karp, Ohio, and Marilyn Adams, New York, and coordinated through the national office by Ellen Malcolm.

Delegate selection, the Judicial Project and the ERA have been the top stories for the NWPC.

NWPC History



Eight years ago The National Women's Political Caucus stated its goal, "...to awaken, organize, and assist the vast political power of women."

With this, the organization's fourth biennial convention, the membership has met its goal and has proved beyond question that the Caucus is the recognized political arm of the women's movement.

From the very beginning, Caucus members set out to demand that American women, who make up the majority of the country's voting population, have an equal voice in policy decisions and equal representation in all legislative bodies.

Within months of the NWPC organizing conference in July, 1971, Caucus representatives were meeting with presidential contenders to ascertain their commitment to a greater role for women in their campaigns, in the conventions, and their administrations, if elected.

In 1972, Caucus activities resulted in doubling the women delegates to the Republican National Convention and tripling the women at the Democratic convention. In March of that year, Congress sent the Equal Rights Amendment to the states for ratification, and

Caucus members launched a massive ERA ratification campaign. That campaign took on a new dimension in 1978 when the organization, in coalition with hundreds of others, won a three-year extension of the ratification period.

NWPC again made history in 1973 by holding the first national political convention of women in over one hundred years at Houston, Texas. Frances "Sissy" Farenthold was elected first NWPC chair. In 1974 the Caucus launched its "Win With Women," campaign to focus attention on women candidates who had decided to run, to encourage other women to run, and thus establishing an electoral strategy by which women would gain power.

The outcome of the 1974 elections resulted in a 26 percent increase in the number of women serving in state legislatures, and a 36 percent increase in statewide officers.

As in 1972, the two national political parties were the targets for the Caucus work in 1975. Then, the Republican-Women's Task Force and the Democratic Women's Task Force were established to aid in the multi-partisan activity of the Caucus, permitting Caucus Democrats and Republicans to organize separately for their respective party activities.



Liz Carpenter



Susan B. Anthony



Gloria Steinem

The Caucus, at its second national convention in Boston in 1975, was the first organization to create a political campaign committee to raise money for candidates. Audrey Rowe was elected chair.

Caucus leaders met with candidate Jimmy Carter in 1976 to hammer out an agreement on the role of women in his administration. In the Republican arena Caucus members lobbied strongly and successfully to keep the Equal Rights Amendment in the Republican platform. It was also in 1976 that the Caucus played a catalyst role in the creation of the Coalition for Women's Appointments.

San Jose, California, rolled out the welcome mat in 1977 where more than 1,500 women attended the Caucus's third biennial convention. ERA ratification was made the organization's number one priority and maximum resources were allocated.

Mildred Jeffrey was elected chair and the Caucus launched into major new program areas with the Judicial Appointments Project and expansion of the Caucus publication

NW/PC Membership



"The Caucus as an organization has something to offer everyone. You don't need to be a political expert to join, but you'll soon become one."

The Caucus began with 271 women in 1971. In eight years, the organization has grown to 45,000 members and supporters. Since the 1977 convention alone, membership has increased by one third.

This is due in large part to the sustained effort by volunteers in state and local caucuses which now number over 300 in 38 states, the District of Columbia and Capitol Hill.

The strength of any organization lies in its members, and the Caucus is no exception. Programs that attract activist women, whether they be political neophytes or veterans, are part of a local and state caucus agenda. Women have joined the Caucus in order to work side by side in ERA ratification and rescission battles; in recruiting candidates and running campaigns; in getting out the vote and monitoring local party activities; in lobbying for feminists appointments to boards and commissions, and in traipsing through the halls of the state legislature to see that important human issues are not lost.

The membership committee, with Peg Cass as chair, along with staff members Grace Orlansky and Paula Pucillo, answer questions on caucus policies and procedures and assist with caucus organizing and development. They are joined by other standing committee and staff members who share their expertise in the areas of fund raising, lobbying, public relations, appointments procedures and political action.

During the past year, two important membership tools were published—a national membership brochure adaptable for state and local use; and a basic organizing manual which contains specific program suggestions. Plans are to supplement this manual with more detailed "how to be effective" sections in each of the Caucus's major project areas.

Also during the past year, with the assistance of Erla Alexander, a new membership reporting procedure was introduced in order to increase the accuracy and facilitate the exchange of membership information between the national office and state and local caucuses.

All staff members are available to Caucus members for consultation on their particular areas of expertise.



Grace Orlansky
Membership Director



Paula Pucillo
Membership Associate

State Chairs

ALABAMA

Marilyn Williams
3424 Altamont Road
Birmingham, AL 35205

ARIZONA

Elly Anderson
6550 Camino Arturo
Tucson, AZ 85718

ARKANSAS

Pat Youngdahl
7108 Rockwood Road
Little Rock, AR 72207

CALIFORNIA

Anne Charles
33 Terrace Avenue
Kentfield, CA 94904

CONNECTICUT

Christine Pattee
50 Forest Street C-1
Hartford, CT 06105

COLORADO

Gerry Bean
2755 Julliard Street
Boulder, CO 80303

DELAWARE

Vivian Houghton
9 Varmar Drive
Swanwick Gardens
New Castle, DE 19720

Linda Long—Co-Chair
607 Mt. Lebanon Road
Wilmington, DE 19803

DISTRICT OF COLUMBIA

Cleo Lewis
2600 Sherman Ave., NW #201
Washington, DC 20001

CAPITOL HILL

Ms. Jennifer Oldfield
c/o Senator Hatfield
463 Russell HOB
Washington, DC 20510

FLORIDA

Dr. Marilyn W. Whisler
822 Guthrie Court
Winter Park, FL 32792

GEORGIA

Beth Schapiro
1992 McLendon Ave., NW
Atlanta, GA 30307

IDAHO

Ann Voilleque
1425 E. 16 Street
Idaho Falls, IDA 83401

ILLINOIS

Teresa L. Wedoff
1182 Home Avenue
Oak Park, ILL 60304

INDIANA

Molly Rucker
5722 Radnor Road
Indianapolis, IN 46226

IOWA

Nancy Norman-Uhl
3103 Elmwood
Des Moines, IA 50312

KANSAS

Vicki Catlett-Newby
1539 N. Pershing
Wichita, KS 67208

KENTUCKY

Kelly Clark
133 North Ashland
Lexington, KY 40502

LOUISIANA

Lynne Hair
3210 N. Stevendale
Baton Rouge, LA 70815

MAINE

Jane Riley
3 Chestnut Street
Hallowell, ME 04347

MARYLAND

Claire Bigelow
4305 Tuckerman
University Park
Hyattsville, MD 20782

MASSACHUSETTS

Sally Lunt
75 Bradford Road
Weston, MA 02193

MICHIGAN

Pat Widmayer
826 Sunset Lane
East Lansing, MI 48823

MINNESOTA

Marilyn Bryant
17819 Maple Hill Road
Wayzata, MN 55391

Carol Connolly
1382 Summit Avenue
St. Paul, MN 55105

MWPC

1821 University Avenue
Room S-291
St. Paul, MN 55104

MISSISSIPPI

Linda St. Martin
P.O. Box 5433
University, MS 38677

MISSOURI

Erika Fox
214 W. Concord
Kansas City, MO 64112

MONTANA

Jan Gerke
1014 Cherry
Helena, MT 59601

NEBRASKA

Mary Ellen Drickey
2102 S. 61 Street
Omaha, NEB 68106

NEVADA

Ellen Pillard—Chair
1420 Earl Drive
Reno, NV 99503

Pat Bates—Co-Chair
701 Pioche
Carson City NV 89701

NEW HAMPSHIRE

Donna McEachern
50 Meadow Road
Portsmouth, NH 03802

NEW JERSEY

Kathy Brock
12A English Village #4B
Cranford, NJ 07016

NEW MEXICO

Susan Thom-Loubet
Box 657
Cedar Crest NM 87008

NEW YORK

Pearl Kurland
4 Jackson Ct.
Guilderland, NY 12084

NORTH CAROLINA

Grace Rohrer
1805 Burningtrees Drive
Chapel Hill, NC 27514

NORTH DAKOTA

Joan Senzek Solheim
420 W. Thayer Avenue
Bismarck, ND 58501

OHIO

Susan Schnebelt
8476 Myrtlewood
Cincinnati, Ohio 45286

OKLAHOMA

Becky Patten
124 East Main
Norman, OK 73069

OREGON

Ann Greenfield
2933 NE 35 Street
Portland, OR 97212

PENNSYLVANIA

Elaine Herald
917 Frick Bldg.
Pittsburgh, PA 15219

RHODE ISLAND

Barbara Colt
288 Spenser Avenue
E. Greenwich, RI 02818

SOUTH DAKOTA

Addie Hayes
2007 E. Dakota
Pierre, SD 57501

TENNESSEE

Penny Edwards
208 Lynnwood Terrace
Nashville, TN 37205

TEXAS

Anita Lang
302 Kingsman
Converse, TX 78109

UTAH

Jan Johnson
P.O. Box 8745
Salt Lake City, UT 84108

VERMONT

Daphne Gratiot
Otis Hill Farm
Woodstock, VT 05091

VIRGINIA

Sarah Brite
121 Campbell Street
Danville, VA 24541

WASHINGTON

Barbara Vanderkoik
2301 Fairview East #407
Seattle, WA 98102

WEST VIRGINIA

Carolyn Snyder
P.O. Box 47
Charles Town, W.VA 25414

WISCONSIN

Liesl Blockstein
4833 Tokay Blvd.
Madison, WI 53711

WYOMING

Jamie Ring
520 Parkview Drive
Casper, WY 82601

NWPC Finance

Politics costs money . . . lots of money . . . and especially for women.

A joint study done by the NWPC and Common Cause found that women candidates raised only 75 percent of the total amount raised by male candidates. And when women run for office, they are almost always challengers striving to defeat incumbents. Challengers generally raise only half what incumbents raise.

Money is crucial not only to the goal of the NWPC—to elect feminists to office—but also for the very existence of the organization.

To fund, staff, and service a national membership organization, and two political committees takes creativity, persistence, determination, sensitivity, and oftentimes the discovery of unknown skills.

The NWPC has been especially fortunate for the past six years to have had the diversified talents of Lael Stegall, who together with Jane McMichael set the stage for the Caucus's solvency. Newly hired development director, Elois King, with her associate, Ann Monnig, are continuing the fund raising activities.

A carefully constructed program budget was assembled by Planning and Development chair, Carol Silverthorn; Finance chairs, Retha Ott, and Erla Alexander matched income projections to budget expenditures. Quarterly reviews are conducted by members of the Administrative Committee while bi-weekly checks are made by the executive director and associate director. The Caucus fiscal year is from January 1 to December 31.

There are seven major sources of income: special events, direct mail campaigns, individual and institutional donors, membership dues, special educational projects, advertising revenue and a door-to-door canvass.

In 1979 the Internal Revenue Service gave NWPC the go ahead to activate the NWPC Leadership Development, Education and Research Fund, a new educational arm, contributions to which are tax deductible.

Special Fund Raising Mechanisms

Advisory Board

The mandate of the Advisory Board is the financial growth and development of the Caucus. Board members are asked to make a commitment worth \$5,000 during their two-year term.

The board is composed of NWPC founders, immediate past members of the Administrative Committee, six leaders of national women's organizations and ten or more individuals who are committed to the goals and purposes of the Caucus. The board is chaired by the immediate past Caucus chair.

ERA Door-To-Door Canvass

A first for any organization committed to the passage of the Equal Rights Amendment was undertaken by the NWPC ERA Fund, which contracted with Women's Resources, Inc., an independent group of highly trained, seasoned canvassers. Door-to-door canvassing has been in operation in New Jersey, New York, Connecticut, Virginia, Maryland, and Pennsylvania. Over 400,000 families have been contacted and \$600,000 raised. Side benefits of this type of fund raising are the one-on-one issue education and the recruitment of members for the local caucuses.

Corporate Support

Since the creation of NWPC, many individual donors have shared the Caucus cause and commitment. However, during the past two years, the NWPC has reached out to the corporate community for additional support and has received a warm and profitable welcome.

Beginning in 1977 with the printing of the NWPC convention program book, through a contribution made by Atlantic Richfield Company (ARCO), corporate donors have demonstrated increasing responsiveness to programs developed by the NWPC. Within recent months the Caucus concluded an agreement with Philip Morris which has resulted in the distribution of 10,000 copies of a new NWPC brochure, "You Have a Lot to Win: Become a Delegate to Your National Party Convention."

The future is indeed bright for this new area of fund raising for the NWPC.



Audrey Rowe(l) and Coretta Scott King



Elois King

Events

Some of these events have taken ERA supporters whistle stopping across the country raising money for pro-ERA candidates, the NWPC/ERA Fund and the Caucus coffers.

Sites have been in Illinois, North Carolina, New York, Philadelphia, Minnesota, Washington and California. Liz Carpenter, Jill Ruckelshaus, Marlo Thomas, Sharon Percy Rockefeller, Jean Stapleton, Phyllis Newman, Betty Comden, Joan Hackett, Carol Burnett, Garry Trudeau, Cheryl Ladd, Lola Redford, Bella Abzug, Gloria Steinem, and Candice Bergen, are only a few of the good friends who have lent their names to the Caucus fund raising efforts.

As varied as the people and places have been the events. One idea took the form of a two-day eating binge, a series of restaurant parties, in New York, organized by Arts, Letters and Politics, and supervised by Sarah Kovner and Bobbie Handman. The idea nibbled its way to Philadelphia where Caucus supporters ate their way through some of the "The City of Brotherly (and Sisterly) Love's" best eateries.

Disco fever took over the fund raising efforts with a Summer Disco Prom, "Get the Fever—Disco for ERA," and last fall a Halloween Party.



Ann Monnig



NWPC 1979 Budget

1979 BUDGET SUMMARY OF TOTAL INCOME AND EXPENDITURE PROJECTIONS

INCOME

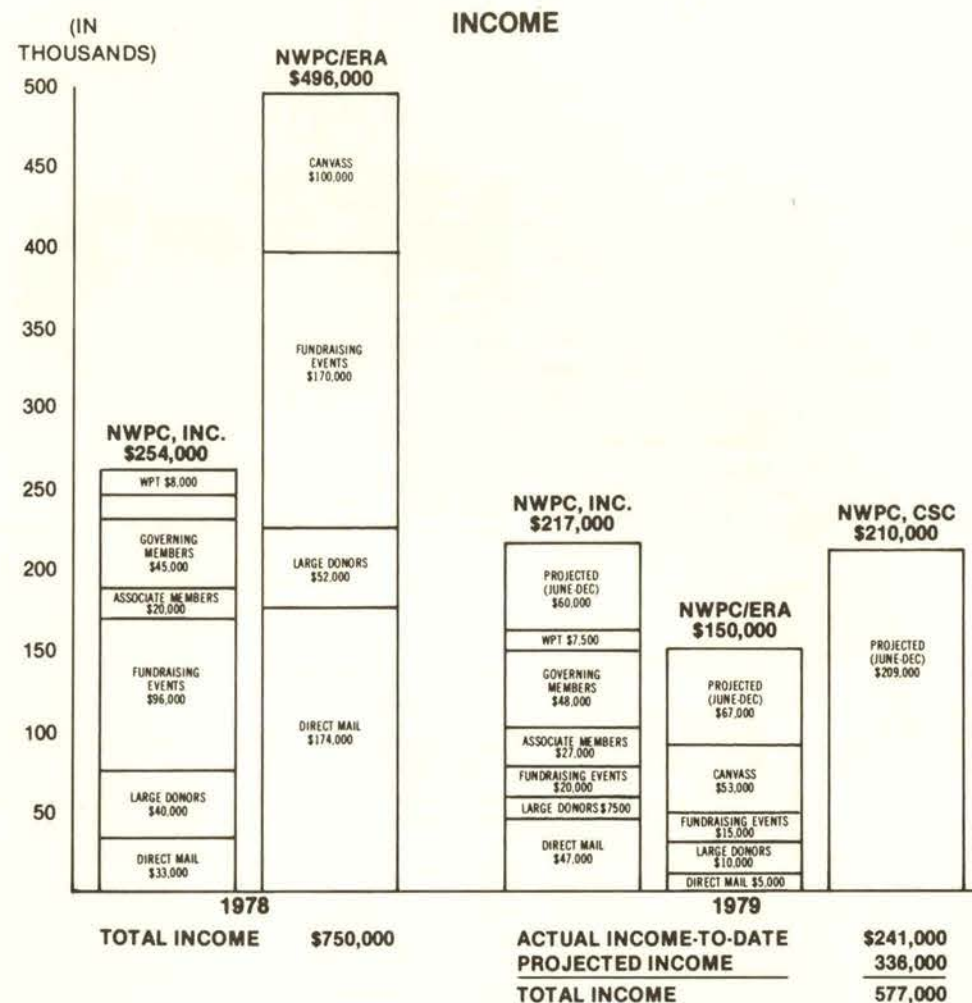
Governing Membership Dues	\$55,000
Dues-Check Off	10,000
Associate Member Renewals	55,000
NWPC ERA Canvass	40,000
Special California ERA Project	100,000
Convention Net Proceeds	10,000
Large Donors	58,000
Convention NWPC Campaign Support Activity	5,000
NWPC Advisory Board Pledges	15,000
Women's Political Times, Advertising Revenues	20,000
Steering Committee Fees	3,000
National Events	60,000
National, State, Local Events	10,000
Merchandise Sales Proceeds	10,000
Lists Purchase For Direct Mail	5,000
Special Projects	101,000
Cash-on-hand	20,000
TOTAL	\$577,000

EXPENDITURES

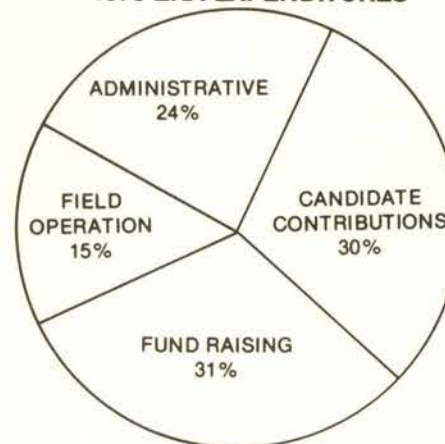
ERA Program	\$150,000
Congressional Candidates	210,000
Women's Political Times	73,000
Membership Outreach Program	38,000
Legislative Program	40,000
Appointments Program	56,000
Special Projects	5,000
TOTAL	\$572,000

The sum \$5,000 is to be applied towards the reduction of the 1978 Accounts Payable (which is approximately \$28,000.)

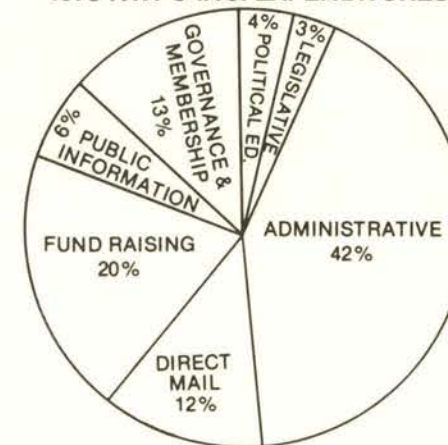
This program budget was developed and presented by the Planning and Development Committee and the Finance Committee at the January 1979 Steering Committee Meeting. It was approved at that meeting.



1978 ERA EXPENDITURES



1978 NWPC INC. EXPENDITURES



NWPC Advisory Board

Audrey Rowe, Chair
Bella Abzug
Owanah Anderson
Lupe Anguiano
Polly Baca Barragan
Nikki Beare
Marjorie Benton
Candice Bergen
Julia Chang Bloch
Betty Blumberg
Rita Mae Brown
Yvonne Brathwaite Burke
Liz Carpenter
Virginia Carter
Marjorie Bell Chambers
Peggy Charren
Sey Chassler
Shirley Chisholm
Mary Clarke
Roxanne Conlin
Elizabeth Dalrymple
Myrlie Evers
Frances T. Farenthold
Brenda Feigen Fasteau
Ronnie Feit
Barbara Feldon
Millicent Fenwick
Robert Georgine
Patricia Goldman
Elinor Guggenheimer
Vivian Hall
Valerie Harper
LaDonna Harris
Christie Hefner
Dorothy Height

Alice Heyman
Elizabeth Holtzman
Koryne Horbal
Marlene Johnson
Victor Kamber
Bobbie Green Kilberg
Coretta Scott King
Odessa Komer
Margaret Laurence
Frances Lear
Norman Lear
Elizabeth Loftin
Olga Madar
Doris Meissner
Joyce Miller
Midge Miller
Lee Novick
Jean O'Leary
Esther Peterson
Lola Redford
Ann Roberts
Sharon Percy Rockefeller
Jill Ruckelshaus
John Ryor
Marilyn Shapiro
Mary Louise Smith
Gillian Martin Sorensen
Gloria Steinem
Marlo Thomas
Joan Tobin
C. DeLores Tucker
Diane Von Furstenberg
Carmen Delgado Votaw
Julia Montgomery Walsh
William Winpisinger
Betsey Wright

Democratic Women's Task Force



Joanne Howes
Democratic Task Force Chair

"Since our last convention in 1977, the Democratic Women's Task Force has accomplished one of the major NWPC goals. We have won equal division for delegates to the 1980 Democratic National Convention. This means that there must be an equal number of male and female delegates from each state to the convention. Our efforts are now geared to making sure that it is our women who get in to those slots.

"How we did it was through dogged determination, follow-up, and a constant monitoring of state Democratic parties. These same strategies, plus our now proven ability to get women to work together in coalitions of organizations, unions and interested women working for the advancement of feminists in the political arena will also be the key in winning our next goal of electing 50 women to the U.S. Congress."

Equal division has been the battle cry for the Democratic Women's Task Force since it was first organized in 1975. Only through "dogged determination" has the dream of Eleanor Roosevelt become a reality in her own party.

This tenet finally became a reality at the Democratic Mid-Term conference in Memphis in 1978 where the efforts of Caucus Democratic Task Force members were instrumental in seeing that equal division was part of the Democratic platform for the 1980 elections.

While busy every year keeping an eye out for women in the Party, the Democratic Task Force is now building a full head of steam as the months chug into a presidential election year. Primaries, caucuses, delegate races, presidential candidates, convention operations, floor strategy, vote counts, platform and rules—the political buzz words, are becoming a daily part of a caucus member's vocabulary.

The Task Force is open to all Democratic caucus members. Its current chair is Joanne Howes, a legislative aide to Rep. Barbara Mikulski (D-MD). Howes helps members translate party jargon into effective tools for gaining access to power and representation for feminists.

Sometimes, the task forces use each other for leverage. For example, the 1978 increase of Republican women elected to state legislatures gave Democratic Task Force members the opportunity to push their party to support more Democratic women in 1980.

Task force members will continue to press both the party and present administration to see that there is no regression for women in the Democratic Party.

Republican Women's Task Force



Susan McLane
Republican Task Force Chair

"Republican women candidates have proved to be 'electable' all over the country with 62 of the 66 new female state legislators being Republican, as well as the new member of the U.S. Senate, Nancy Kassebaum.

"But the problem still remains to convince the Republican hierarchy that women candidates must be encouraged and supported. The very successful meeting

of the Republican Task Force in January 1979 greatly strengthened our network. With this new strength, task force members are launching an all out effort to increase the number of women delegates at the 1980 Republican National Convention, and to present to the Republican presidential nominees an understanding of the feminist views on issues sure to surface in the upcoming campaign."

Being a feminist in the Republican party is akin to having an "odd" license plant and an empty tank on an "even" day. But today members of the NWPC Republican Women's Task Force no longer do the "lickin and stickin" for the male candidates. They've thrown their jacket dresses and white gloves out the window.

In 1978, 62 of the 66 new women elected to state legislatures were Republicans. Nancy Landon Kassebaum of Kansas broke the barrier of that all-male bastion—the U.S. Senate.

As with the Democrats, Republican Task Force members are well steeped in the intricacies of party politics. Clusters of Republican feminists quietly plotting over lunch and in evening living rooms are credited with the site selection of Detroit, Michigan, a ratified ERA state, for the 1980 national convention.

A plan for delegate selection has already been launched. Susan McLane, chairs the Republican Task Force from her outpost in that number one primary state of New Hampshire. Throughout the months before 1980 McLane serves up spaghetti and the feminist line to the many visitors who come to her state and her kitchen.

Although the GOP has no equal division delegate selection rule, members are strategizing to elect more feminists in 1980.

Networking and mutual support is the key for Republican Caucus feminists and recent successes have been naming Pat Goldman, former Task Force chair, to the National Transportation Safety Board and Pat Bailey to the Federal Trade Commission.

Legislative Committee



Illinois WPC Chair Teresa Wedoff and member Marsha Gevers lobby Illinois Congressional delegation.

The National Women's Political Caucus's Legislative Committee has continued its aggressive legislative program by piling up its successes on major issues of concern to all women.

In 1978, the ERA extension represented the zenith of persistent effort, follow-up, coalition work, savvy, and energy for Caucus members and everyone concerned with the ongoing fight for equal rights. NWPC legislative efforts were heavily involved in the successful passage of the pregnancy disability and full employment bills, plus bills covering flexi-time and part-time employment for federal employees. The organization's leadership testified and lobbied on CETA re-authorization, reorganization of the government's civil rights enforcement efforts, employment discrimination on Capitol Hill, judicial selection, and the ERA extension. Working on the unsuccessful attempt to modify veterans preference and prevent funding cut-offs for abortion were among other lobbying activities.

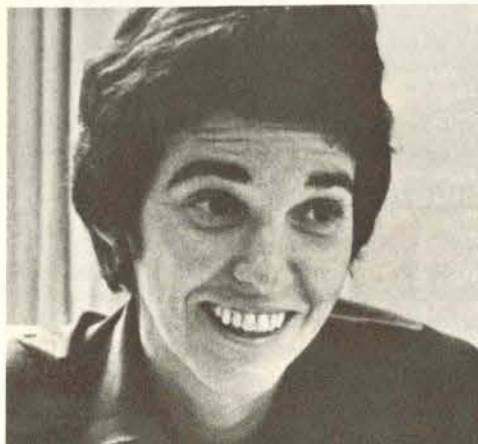
An intensive lobbying strategy to avert the drastic budget cuts by the Carter administration proposals was activated by Caucus members. Although unsuccessful, both Congress and the Carter administration were assured that every issue is a women's issue.

The Legislative Committee, under the direction of Susan McLane, Republican co-chair, and Marilyn D. Clancy, Democratic co-chair, and coordinated through the national office by Ann Kolker, has also distributed eight position papers on employment, education, alternative work patterns, social security, pensions, gay rights, credit and campaign financing to all women candidates running for public office and many members of Congress. One of the major projects instigated by the committee was the distribution of a congressional voting chart which was published before the 1978 primary elections and rated the voting records of congressional representatives on their commitment to women. The voting chart proved to be a very useful tool for local caucuses to decide on endorsements for candidates.



Ann Kolker
Legislation Director

NWPC Judicial Appointments Project



Pat Bailey
Legal Support Caucus, Co-Chair



Susan Ness
Legal Support Caucus, Co-Chair

There were only five women in the entire federal judiciary in 1977 when the Judicial Appointments Project began. By October, there will be as many as 35 due to the watchdog efforts of the NWPC Judicial Appointments Project.

Working closely with the Legal Support Caucus membership, the project has formed a nationwide network to recruit and assist women through the appointments process. Project workers have also brought public attention to the shocking under-representation of women on the state and federal bench, have educated women on the selection process, and have worked closely with the Carter administration and senators to insure that the selection process is fair and open.

The NWPC has been the chief monitor of the appointments process, beginning with NWPC Chair Mildred Jeffrey's testimony before the opening hearing of the Senate Judiciary Committee where she critiqued the selection process. This monitoring process will continue as the NWPC members across the country gain the expertise to make the difference in state judicial elections.

Susan Ness, chair of the NWPC Legal Support Caucus, Vice Chair Pat Bailey, and others, have provided the project with leadership.

Tax deductible contributions to the NWPC Leadership Development, Education and Research Fund have provided major support for this project.

Coalition For Women's Appointments

The Coalition for Women's Appointments, a network of over 60 national women's organizations, was founded in 1976 in response to President Carter's commitment to appoint women in significant numbers to key posts within the federal government.

Housed and staffed by the NWPC, the Coalition monitors government appointments and civil service developments which act as the key to women's access to top level positions. Through monthly meetings, the coalition alerts members to upcoming vacancies. This network of women throughout the government and of state and local talent banks provides the White House and federal agencies with a continuing flow of women's names.



Women's Political Times



Sharon Flynn



Robbie Snow



Carol Cladouhos

Published by: National Women's Political Caucus, Inc. **Women's Political Times** Vol. 4, No. 4 Winter 1978 SAMPLER COPY

Women Set New Records With '78 Wins

By Robbie Snow

ONCE AGAIN in 1978 women increased their career numbers in elective office across the country, setting new records for winning statewide offices.

Contrary to national media reports that women lost ground in '78, they are very successful and are making about women's election records, says Michael Jeffrey, Pacific Chair.

"We won 75% of our targeted state seats, notable breakthroughs in statewide offices include State Supreme Court Justice Rose Bird in California, a gubernatorial of later in Oregon and two new women lieutenant positions.

"Also, Jeffrey added, "the call size of women elected to Congress is impressive.

Democratic Stephanie Pearson, a winner this year, ran in the 9th Congressional District of New York, an ethnic, competitive district.

She joined Cynthia Brown, a Republican winner from the 2nd district of Maine.

Brown and Pearson, who were each endorsed by the NWPC Campaign Support Committee, represent the kind of candidates that the

NWPC ERA Fund Wins in '78

75% of Fund-Supported Candidates Win Seats in State Legislatures

by Sharon Flynn

CAUCUS MEMBERS AND STAFF worked into the late hours election night to learn that the NWPC ERA Fund won 75 percent of its targeted races.

Showing the national media's focus on Republicans vs. Democrats and the various far left groups, NWPC had a network of state caucus contacts to call or write to the national office in Washington, D.C.

The NWPC ERA Fund which contributed a total of \$200,000 to seven targeted states won 75 of 147 pro-ERA races.

"Victory was particularly sweet for us," claims Michael Jeffrey, NWPC Campaign Chair. "In North Carolina we saw Jim McDuffie, a former anti-ERA candidate who

had switched his vote in 1976, then he went down to defeat a second time in the general, after he ran as an independent with STDF ERA forces campaigning for him." Jeffrey added.

Of 26 South Carolina House and Senate candidates endorsed by the Fund, 20 won.

In Florida the sweep of victory was even greater for the Fund. It won 41 out of 55 races in the House and Senate races.

Winning Florida Senate candidate Pat Thrall ran a tough campaign against incumbent anti-ERA candidate Gene Ray. Ray claimed that Thrall was "the anti-ERA ERA" in the state.

Of the 160 state senators from the Fund 75 percent are pro-ERA, 25 percent are anti-ERA.

campaign, and we faced a well informed opponent. After our results became known to Gene Ray and Gene Ray, the NWPC ERA Fund, we received help. Supporters were numerous and the technical assistance offered by the Caucus permitted us to attack their independence in the future. Thrall stated.

In another key Florida Senate race targeted by the Fund, Bob McInnis ran in the primary against pro-ERA incumbent Ralph Shotton. McInnis characterized the state "I don't think there was a more honest ERA race in the state of Florida than my campaign against Gene Ray. Pro-ERA, I'm convinced that the reason I defeated that opponent in the primary and a subsequent anti-ERA 12 percent was because of the NWPC ERA Fund."

See NWPC, page 3.

INSIDE: Sharon Percy Roeder talks about ERA extension... page 19
"People and Politics" ... Who's doing what, where... page 13
A look at the record of the 90th Congress... pages 14 and 15
NWPC Advisory Board... an interesting group... pages 5, 10 & 11

Check New Record, page 4

A major project for the NWPC is the expansion and sophistication of its major ongoing publication, **Women's Political Times**, which has been hailed as the best feminist political newspaper in the country.

Well into its fourth year of publishing, the **Times** has grown from eight to 24 pages, and from a quarterly to bi-monthly schedule.

Past issues have included stories on women candidates, ERA status, appointed women, women and the national parties, political alerts, and Congressional action on legislation, news from member caucuses and coverage of the men and women who are affecting positive change on the political make up of the country.

Sharon Flynn, presently acting executive director, is the creator and editor of the paper. Robbie B. Snow is the managing editor. Numbers of other staff, as well as caucus friends, contribute to every issue.

Carol Cladouhos, advertising manager, is responsible for the tremendous 85 percent increase in advertising revenues over the past two years.

NWPC Convention Schedule

THURSDAY, JULY 12

Noon-10:00 PM	REGISTRATION	Convention Center—Lower Lobby
10:00 AM-11:30 AM	Nominations Committee	To Be Announced
11:00 AM-12:30 PM	Political Action Committee	To Be Announced
Noon-6:00 PM	Hospitality Suite	Cabana A&B—4th Floor at Stouffer's
1:00 PM-5:00 PM	Western States Regional Meeting	Stouffer's Ivory Rm. B
2:00 PM-5:00 PM	Credentials Committee Meeting	To Be Announced
5:00 PM-6:00 PM	Press Volunteers Meeting	Convention Center Rm. 222
6:00 PM-8:30 PM	Administrative Committee Meeting	Stouffer's Ivory Rm. B
9:00 PM-Midnight	Riverboard Party	Public Landing Near Riverfront Stadium

FRIDAY, JULY 13

7:30 AM-8:00 PM	REGISTRATION	Convention Center—Lower Lobby
7:30 AM	Breakfast Press Briefing	To Be Announced
9:00 AM-10:00 PM	Hospitality Suite	Cabana A&B—4th Floor at Stouffer's
11:00 AM-9:00 PM	Exhibits, including State Caucuses	Exhibitors—check in at Grand Ballroom—Stouffer's Mezzanine

8:45 AM-10:15 AM

WORKSHOP SESSION I

Convention Center

Political Skills:

Fund Raising/Events	Rm. 213
Media Coverage/Advertising	Rm. 215
Image Awareness	Rm. 219
Campaign Operations	Rm. 229
Campaign Planning/The Basics	Rm. 225
Warming the Bench: Electing Women to the Judiciary	Rm. 221

Caucus Building Skills:

Programs and Membership for Active Caucuses	Rm. 217
Organizational Communication	Rm. 227

WOMEN AND THE POLITICS OF ENERGY Bronze Rm. A

10:30 AM-Noon WORKSHOP SESSION II Convention Center

Political Skills:

The Right Wing Rm. 211
Fund Raising/Planning and Operations Rm. 213
Direct Voter Contact Rm. 215
Public Opinion Surveys Part I Rm. 217
Warming the Bench: Appointing Women to the Judiciary Rm. 221

Caucus Building Skills:

Programs and Membership For New or Inactive Caucuses Rm. 219
Leadership Development Rm. 227
Organizational Effectiveness Rm. 229
Publicity, Public Relations and Media Planning Rm. 225

Noon-2:00 PM TRI-STATE ELECTED WOMEN'S LUNCHEON Convention Center—South Meeting Rm. 209

2:15 PM-3:45 PM WORKSHOP SESSION III Convention Center

Political Skills:

Direct Voter Contact Rm. 213
Media Coverage/Advertising Rm. 215
Image Awareness Rm. 219
Who We Are: Women Voters/Women Candidates Rm. 229
Campaign Planning/A Clinic for Candidates and Campaign Managers Rm. 225

Caucus Building Skills:

Leadership Development Rm. 211
Programs and Membership for Active Caucuses Rm. 217
Programs and Membership for New or Inactive Caucuses Rm. 227
Successful Fund Raising: More Money, More Members, More Fun Rm. 221

2:15 PM-3:45 PM SEMINARS: Stouffer's

THE INTERNATIONAL YEAR OF THE CHILD:
American Children, Privileged or Not? Bronze Rm. A
WOMEN IN SPORTS Bronze Rm. B

4:00 PM FILMS Convention Center

"With Babies and Banners" Rm. 211
"The Nestle Boycott" Rm. 211

Black Caucus King Conference Suite, 4th Floor
Lesbian Caucus Ivory Rm. A
Asian Caucus Bamboo Rm. A
Chicana Caucus Bamboo Rm. B
Older Women's Caucus To Be Announced
Legal Support Caucus Convention Center Rm. 217
Welfare Reform Task Force Convention Center Rm. 223

5:30 PM-6:30 PM CONVENTION COMMITTEES Convention Center

Resolutions Rm. 219
Nominations Rm. 215
Bylaws To Be Announced
Rules To Be Announced
Elections To Be Announced

6:00 PM-8:00 PM CINCINNATI CHILI Convention Center
CHALLENGE DINNER South Meeting Rm. 209

8:00 PM-11:00 PM ORIENTATION TO PARTY CONVENTION DELEGATE SELECTION Stouffer's

Republican Women's Task Force Bronze Rm. A
Mary Crisp, co-chair Republican National Committee, speaker
Democratic Women's Task Force Bronze Rm. B
Barbara Mikulski, Democratic Congresswoman, Maryland, speaker

11:00 PM-Midnight SPECIAL MEETING FOR DELEGATION CHAIRS AND STATE CAUCUS CHAIRS Stouffer's Ivory Rm. B

SATURDAY, JULY 14

7:30 AM-8:00 PM REGISTRATION Convention Center—Lower Lobby
All Day Resolutions Committee Convention Center—Rm. 225
7:30 AM-9:00 AM Workshop: "State Caucus Political Committees" To Be Announced
9:00 AM-Midnight Hospitality Suite Cabana A&B—4th Floor at Stouffer's
8:30 AM-10:00 AM ERA Briefing: Rescission and Ratification Stouffer's Bronze Rm. A

10:00 AM-Noon	CONVENTION SESSION: Opening Ceremony, Speakers, Business	CONVENTION CENTER
Noon-2:00 PM	ERA LUNCHEON	Convention Center— South Meeting Rm. 209
2:00 PM-4:30 PM	Convention Session Reconvenes Speakers, by laws, resolutions	Convention Center
2:15 PM-3:45 PM	WORKSHOP SESSION IV	Convention Center
Political Skills:		
	The Right Wing	Rm. 211
	Campaign Operations	Rm. 215
	Public Opinion Surveys Part II	Rm. 217
	Who We Are: Women Voters, Women Candidates	Rm. 227
Caucus Building Skills:		
	Organizational Communication	Rm. 213
	Publicity, Public Relations and Media Planning	Rm. 219
	Organizational Effectiveness	Rm. 229
	Successful Fund Raising: More Money, More Members More Fun	Rm. 221
2:15 PM-3:45 PM	SEMINARS	Stouffer's
	BREAKING THE BARRIERS I: Women in Non-Traditional Jobs	Bamboo Rm. A&B
	BREAKING THE BARRIERS II: Women in Non-Traditional Jobs	Ivory Rm. A&B
4:00 PM	FILMS	Convention Center
	"With Babies and Banners"	Rm. 211
	"The Nestle Boycott"	Rm. 211
4:30 PM-6:30 PM	RECEPTIONS	
	Judge's Reception	To Be Announced
	Elected Women's Reception	Netherlands Hilton Continental Room
	Appointed Women's Reception	Terrace Hilton Skyline Room
7:30 PM-11:00 PM	CONVENTION SESSION RECONVENES	Convention Center
	Report of Nominating Committee, Speeches by Candidates for NWPC Offices Continuation of By-laws and resolutions	

SUNDAY, JULY 15

9:00 AM-5:00 PM	Hospitality Suite	Cabana A&B— 4th Floor at Stouffer's
10:00 AM-2:30 PM	CONVENTION SESSION: Speakers, Voting for NWPC Offices, Resolution, Closing Ceremony	Convention Center
2:30 PM	ADJOURNMENT	Convention Center
3:00 PM	Films "With Babies and Banners" "The Nestle Boycott"	Convention Center— Rm. 211
3:00 PM-5:00 PM	Steering Committee Meeting	Stouffer's Ivory Room A

Plenary Session Agenda

SATURDAY, JULY 14

10:00 AM to Noon: OPENING CEREMONY

Mildred Jeffrey
NWPC Chair officiating
Call to Order
Adoption of Credentials
Adoption of Rules
Adoption of Agenda

Gertrude Donahey
Ohio State Treasurer

Bobbie Sterne
Mayor of Cincinnati

Keynote Speaker:

Patricia Harris
Secretary U.S. Department of Housing
and Urban Development

Noon: TRI-STATE LUNCHEON

2:00 PM to 4:30 PM: SESSION RECONVENES

Elizabeth Holtzman
Congresswoman New York State

Business—By Laws

Norma Paulus
Oregon Secretary of State

Hon. Rita Davidson
Associate Judge
Maryland Court of Appeals

4:30 PM: RECESS

7:30 to 11:00 PM: SESSION RECONVENES

Polly Baca-Barragan
Colorado State Senator

Report from NWPC
Nominations Committee
NWPC Candidate Speeches
Continuation of By Laws
Resolutions

SUNDAY, JULY 15

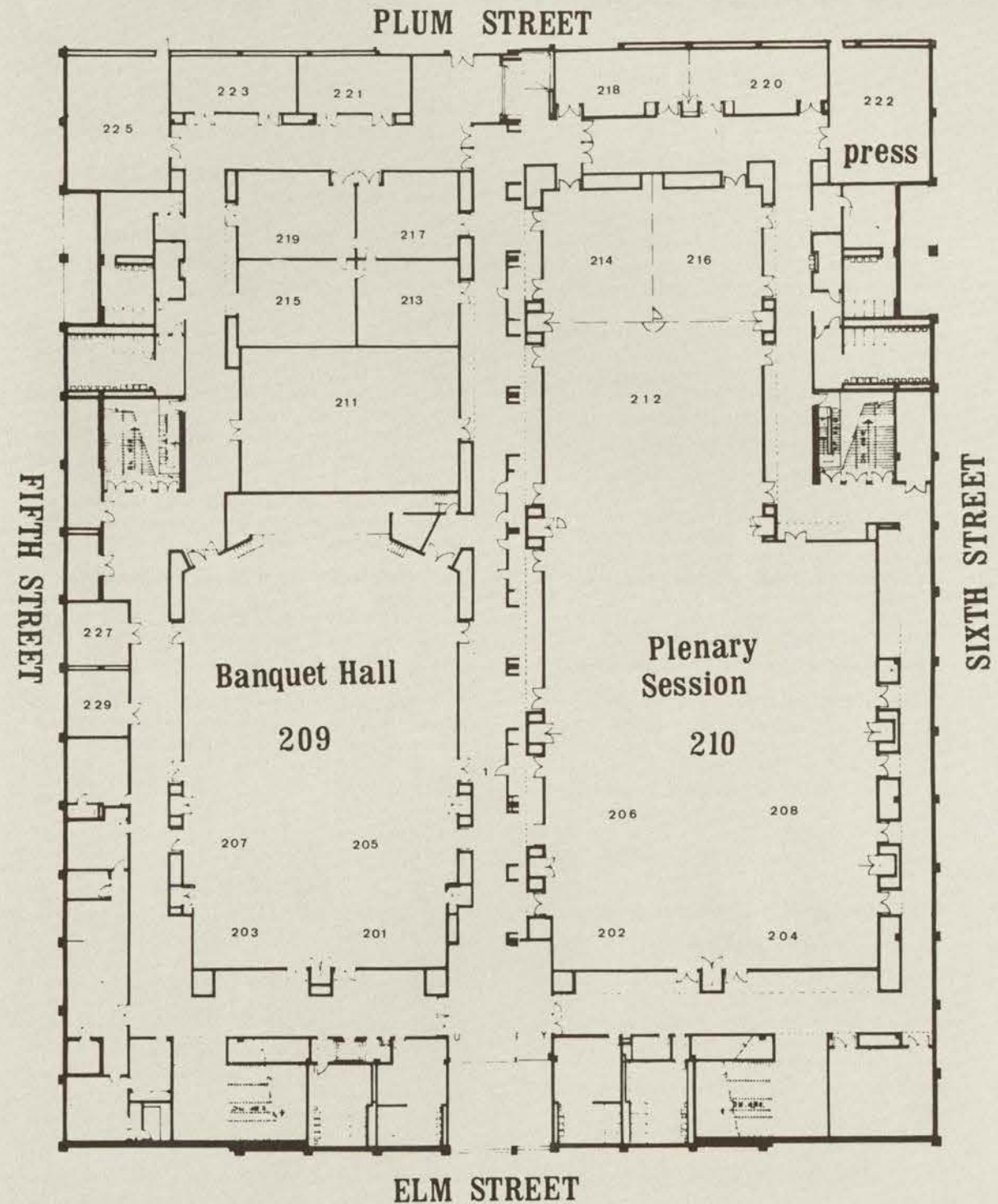
10:00 AM: SESSION RECONVENES

Gloria Steinem
Editor of Ms.
Elections-Balloting
Resolutions

Bella Abzug
Co-Chair Women USA

2:00 PM: ADJOURNMENT

Convention Center Map



NWPC Convention Workshops and Seminars

Caucus Building Skills

Organizational Effectiveness: Getting Your Caucus to Work

This workshop will focus on how to assess local and state needs, set goals, assign tasks and the best way to evaluate progress by examining resources and options from the perspective of building a representative caucus.

Marcia Hunt, NWPC Nominating Committee Chair, Moderator.

Organizational Communication: How to Find Out What You Need To Know

Participants will examine organizational structures, formal and informal gathering systems and discuss a practical application of networking.

Dr. Janet Elsea, Professor of Communication, Arizona State University, Moderator.

Program and Membership for New or Inactive Caucuses

Geared toward self-help for new caucuses or inactive ones, this workshop will bring together members of established and active groups with those just getting a foot in the door to exchange ideas and techniques for expansion and rejuvenation. It will also focus on developing programs for the retention of members.

Peg Cass, NWPC Membership Committee Chair, Moderator.

"Leadership Development A Look at Power"

The different types of power will be discussed during this workshop. Group dynamics, problem solving, decision making, conflict resolution, motivating volunteers and accountability will also be major topics of discussion.

Denise Cavanaugh, of Cook Cavanaugh Associates, Moderator

Programs and Membership for Active Caucuses

This is where members of active caucuses will find out, through an exchange of ideas with other

active groups, the best way to remain a vital organization. Discussion will touch on the use of talent banks, political action committees, appointment projects, outreach, coalition building, legislation and endorsement.

Anne Charles, California State Women's Political Caucus Chair, Moderator

Successful Fund Raising: More, Money, More Members, More Fun

"How to" will be the emphasis of this workshop where participants will learn about strategies for locating and dealing with funding sources (corporations, foundations and individuals). Members will discuss such techniques as interviews, proposal writing, grants, and budget monitoring. The preparation of financial statements is also on the agenda.

Joan Flanagan, author of "Grass Roots Fund Raising Book," and Margaret Standish, Executive Director, Play-boy Foundation, Moderators

Publicity and Media Planning

This workshop will emphasize ways to gear caucus press coverage toward the political goals of the organization and the role it will play in the 1980 elections.

R. Ellen Boddie, Associate Director of Geo Magazine, former NWPC Press Coordinator, and Roberta Weiner, Press and Public Relations Consultant, Moderators

Political Skills

Campaign Planning: The Basics

This workshop will take the questions of campaign planning from the first time a woman thinks about running for office to the moment the last vote is counted. It will look at the how's and who's of campaign planning plus the organizational structure of the organization.

Wilma Goldstein, formerly with the Republican Congressional Campaign Committee and Rosalie Whelan, Executive Director, National Women's Education Fund, Moderators

Direct Voter Contact Reaching Individual Voters By Mail, Telephone, In-Person

Participants in this workshop will learn how to "get out the vote" and have it be in their favor. Discussion will cover the use of volunteers, direct mail, the media and candidate contact. It will also cover the use of targeting skills and how they apply to a successful campaign.

JoAnn Davidson, Co-Chair, Franklin County Republican Central Committee and Chair Franklin County Republican Organization and Sandy Schwartz, Government Relations, Ohio Education Association, Moderators

Fund Raising

These workshops will focus on the basis of any campaign—money. Participants will learn about the best ways of raising funds by putting on events, and a second workshop will cover the categories of individual donations and how to gather and respond to contributions.

Betsy Crone, Political and Fund Raising Consultant, Barbara Handman, Fund Raising and Public Relations Consultant, Arts, Letters and Politics, Moderators for Campaign Event Fund Raising Workshops.

Betty King, Special Assistant to District of Columbia Mayor, Marlon Barry, Betsy Crone Moderators for Campaign Fund Raising Planning and Operations.

Public Opinion Surveys Part I and Part II

What the public thinks of both the candidate and her opponent and how to use both positive and negative surveys to the best advantage will be the focus of this workshop.

Wilma Goldstein, Leslie Green, National Survey Research Group, Inc. Dorothea Lynch, Cambridge Survey Research

Media Coverage/Advertising

Whether it be the newspapers covering the candidate's announcement to run or an advertisement on television the media can often win or lose the campaign for inexperienced candidates. This workshop will show the do's and don't's of good media utilization.

Marjory Pizzuti, Press Secretary, Celeste for Governor Ohio, 1978 and Roberta Weiner, Press and Public Relations Consultant, Moderators.

Image Awareness

This workshop will help candidates learn how to put their best side forward at all times. Body language, dress and how to get across the right message will be discussed.

Nancy Thompson, Corporate, Government and Political Image Consultant, Moderator

Warming the Bench: Electing and Appointing Women to the Judiciary

These workshops will focus on the special problems associated with running a judicial campaign on the one hand—financing, bi-partisanship, judicial ethics, "marketing," campaign support. And on the other hand the process of lobbying and coalition building, bar association politics, choosing a candidate, strategies for dealing with selection panels, Senators, the Justice Department, the White House, the American Bar Association's Judiciary panel, and the Senate Judiciary Committee for women seeking appointment to the bench.

Susan Ness, NWPC Legal Support Caucus Chair, Moderator

Understanding the Right Wing

This workshop will discuss the relationship between the right wing and women's movement with the hope that by gaining a better understanding of the right wing, we will then be more prepared to meet the challenges as they arise.

Midge Miller, Democratic Congresswoman from Wisconsin, Moderator.

Seminars

International Year of the Child: American Children— Privileged or Not?

This seminar will look into why mortality, disease and malnutrition, among American children are higher than in many so-called "developing countries." Participants will also explore the consequences of having every third American child living in a family with an income well below that of acceptable economic sufficiency. They will be discussing why, in a country that has the wealth to raise the standard of living of all children to a decent level, leaders rarely consider the effects of national policy decisions on the lives of children.

Rita Triviz, NWPC Vice Chair, Moderator

Breaking the Barriers: Women In Non-Traditional Jobs

Women from diverse educational, economic and ethnic backgrounds are continually breaking the barriers in the job market. This seminar will

provide panel members a forum to talk about how they broke through those barriers.

Part I, Kate Lloyd, Editor-in-Chief, "Working Woman";
Part II, Julia Chang Bloch, Deputy Director for Africa,
International Communications Agency, Moderators

Women and the Politics of Energy

As producers, consumers and educators, women can no longer say they don't understand energy technology and how it applies to their everyday lives. This lack of knowledge has not only affected the consumer habits of the average woman—but also has led to the exclusion of women from energy policy decision making.

This seminar will work on demystifying the complex and technical information which surrounds the energy industry into easily understood language. Panel members will discuss the question

of conservation, renewable energy sources and how energy policy decisions apply to families and community, and their affect on national behavior.

Lola Redford, NWPC Advisory Board Member and
President of Consumer Action Now, Moderator

Women In Sports

In the nation's schools, in the amateur as well as the professional sports arena, women are expanding their role at every level of sports participation.

What are the problems? What has been the impact of Title IX and what do the current guidelines being considered by the Department of Health, Education and Welfare portend for the future? These questions and others will form the basis of a discussion by women representing ALL levels of sports participation.

Margot Polivy, Counsel, Association for Inter-collegiate Athletics for Women, Moderator

General Information

Badges

Badges will be required for entrance to all workshops, seminars, and the business session.

Registration & Ticket Office

Convention Center

Lower Lobby

Thursday, noon-10 p.m.

Friday, 7:30 a.m. to 8 p.m.

Saturday, 7:30 a.m. to noon

Hospitality Suite

Stouffer's Tower, Cabana A & B

Thursday, noon-6 p.m.

Friday, 9 a.m.-10 p.m.

Saturday, 9 a.m.-midnight

Sunday, 9 a.m.-3 p.m.

Child Care Center

Stouffer's Towers

The Commodore Room

Rm 1A-Sleeping Area

Thursday, 10 a.m.-5 p.m.

Friday, 9 a.m.-10 p.m.

Saturday, 9 a.m.-10 p.m.

Sunday, 10 a.m.-3 p.m.

Exhibits

Stouffer's Grand Ballroom

North Tower

Friday, 11 a.m.-8 p.m.

Saturday 11 a.m.-8 p.m.

Convention Staff Office

Lower Lobby Office Complex

Cincinnati Troubleshooters Headquarters

Stouffer's Rooms 1B & 1C

Convention Hotels

Stouffer's Towers 352-2123

Netherlands Hilton 621-3800

Alternate Housing

University of Cincinnati

Dormitory telephone number

465-2442

contact: Marian Haisley

Taxi Service

Yellow Cab 241-2100

Checker Cab 621-3600

Clifton Cab 281-1661

Radio Cab 244-2900

Convention Message Center

Lower Lobby Outside

Office Complex

Transportation

Cabs from University of Cincinnati are \$3. City bus service is available.

Convention Committee

Convention Committee Chair

Catherine B. Hartnett, Virginia

Convention Treasurer

Kathy Helmbock, Ohio

Site & Facilities

Susan Schnebelt, Ohio

Alternate Housing

Ann Mitchell, Ohio

Transportation

Patty Burke, Ohio

Child Care

Norma Baker, Ohio

Hospitality

Diane Teichman, Ohio

Shirley Mountel, Ohio

Volunteer Recruitment

Barbara Musselman, Ohio

Press & Publicity

Karen Scates, Washington, D.C.

Judy Ettenoffer, Ohio

Ginny Karp, Ohio

Fund Raising Chair

Bobbie Hall, Ohio

Fund Raising Treasurer

Cindy Mahin, Indiana

Exhibits

Mary Stanley, California

Registration

Margaret Ragsdale, Kentucky

Credentials

Peg Cass, Iowa

Rules

Angie Flores, Texas

Resolutions

Anita Lang, Texas

Elections

Robyn Remaklus, Oregon

Nominations

Marcia Hunt, California

Program

Elin Skinner, Minnesota

Anita Nelam, Washington D.C.

By-Laws

Martha Smiley, Texas

Program Book

Carol Cladouhos

Robbie Snow

Sharon Flynn

Workshop & Seminar Coordinator

Deborah Harding

Convention Coordinator

Kristine Jacobs

NWPC ERA Fund



Illinois Winners, Carol Moseley Brown (D-24th), (l), incumbent Susan Catania (R-22nd), Barbara Flynn Currie (D-24th).

Because the Caucus wanted to expand its universe for raising money for candidates, the NWPC-ERA Fund was formed by members acting as individuals for the purpose of putting campaign dollars into key unratified state elections and to follow-up with hard lobbying for the ERA.

In 1978, the NWPC-ERA Fund contributed a total of \$350,000 in cash and technical assistance to candidates in seven unratified states (Oklahoma, Missouri, North Carolina, Florida, Illinois, Arizona, Nevada). The Fund won 75 percent of its targeted races—106 of 142 pro-ERA campaigns.

Decisions on candidate endorsements were made in cooperation with state and local caucuses and the ERA committee.

Pat Frank, who ran a tough race for the Florida senate said of the Fund, "As so often occurs with women candidates, money was scarce in our campaign, and we faced a well financed opponent. But our volunteers were numerous and the technical assistance offered by the Caucus permitted us to utilize them to the fullest."

Bob McKnight who defeated ERA turncoat Ralph Posten in another key Florida senate race said, "I'm convinced I defeated Posten because of the help from the Caucus and its members."

During 1979 the ERA Fund is working in Virginia and Louisiana. Plans are already in the works to go back into key states for the 1980 elections. As one Caucus member so aptly put it, "We will not let ERA go away."

Women Elected to Office—1978

U.S. SENATE Kansas	Nancy Landon Kassebaum	Republican
U.S. HOUSE OF REPRESENTATIVES Colorado		
1st CD	*Pat Schroeder	Democrat
Illinois		
7th CD	*Cardiss Collins	Democrat
Louisiana		
2nd CD	*Corinne (Lindy) Boggs	Democrat
Maine		
2nd CD	Olympia Snowe	Republican
Maryland		
3rd CD	*Barbara Mikulski	Democrat
4th CD	*Marjorie Holt	Republican
5th CD	*Gladys Noon Spellman	Democrat
6th CD	Beverly Butcher Byron	Democrat
Massachusetts		
10th CD	*Margaret Heckler	Republican
Nebraska		
3rd CD	*Virginia Smith	Republican
New Jersey		
5th CD	*Millicent Fenwick	Republican
New York		
9th CD	Geraldine Ferraro	Democrat
12th CD	*Shirley Chisholm	Democrat
16th CD	*Elizabeth Holtzman	Democrat
Ohio		
20th CD	*Mary Rose Oaker	Democrat
Tennessee		
3rd CD	*Marilyn Lloyd	Democrat
GOVERNOR Connecticut	*Ella Grasso	Democrat
LIEUTENANT GOVERNOR Colorado	Nancy Dick	Democrat
Hawaii	Jean S. King	Democrat
South Carolina	Nancy Stevenson	Democrat
Vermont	Madeleine Kunin	Democrat
SECRETARY OF STATE Arizona	*Rose Mofford	Democrat
California	*March Fong Eu	Democrat
Colorado	*Mary Estill Buchanan	Republican
Connecticut	Barbara Kennelly	Democrat
Minnesota	*Joan Grove	Democrat
New Mexico	Shirley Hooper	Democrat
South Dakota	Alice Kunder	Republican
Wisconsin	Vel Phillips	Democrat
Wyoming	*Thyra Thompson	Republican
STATE TREASURER Alabama	*Annie Laurie Gunter	Democrat
Arkansas	*Nancy Hall	Democrat
Idaho	*Marjorie Moon	Democrat
Kansas	*Joan Finney	Democrat
Ohio	*Gertrude Donahey	Democrat
Wyoming	Shirley Wittler	Republican
STATE AUDITOR Alabama	*Bettye Frink	Democrat
COMMISSIONER OF THE BUREAU OF LABOR Oregon	Mary Roberts	Democrat
JUDGE, STATE COURT OF APPEALS New Mexico	Leila Andrews	Democrat
New Mexico	Mary Walters	Democrat
Oregon	*Betty Roberts	Democrat
CLERK OF THE COURT Indiana	Marge O'Loughlin	Republican
SUPERINTENDENT OF PUBLIC INSTRUCTION Arizona	*Carolyn Warner	Democrat
Wyoming	Lynn Simons	Democrat
STATE BOARD OF EDUCATION Colorado	Dorothy Gottlieb	Republican
UNIVERSITY REGENT Colorado	Rachael Noel	Democrat

National Women's Education Fund

* Re-elected

NWPC Campaign Support Committee

The Campaign Support Committee is the political action committee of the NWPC. It is a federal committee which can raise and contribute funds to federal candidates and is registered with the Federal Elections Commission.

1978 saw women increase their overall numbers in elective office across the country. A woman finally broke the male bastion in the U.S. Senate—Republican Nancy Landon Kassebaum, while Caucus members Geraldine Ferraro (D-NY) and Olympia Snowe (R-ME) won election to the U.S. House of Representatives. Thirteen of the 15 incumbent women representatives who sought re-election were returned by their constituencies; while Beverly Byron, widow of an incumbent congressman running for re-election at the time of his death, took over the campaign and ran successfully for the seat.

But the real success story for women was told in the state and local races. The election of four new women to the lieutenant governor posts in Colorado, Hawaii, South Carolina, and Vermont joined one in Mississippi. (In Kentucky, Thelma Stovall lost her lieutenant governor seat when she ran for governor.)

There are two women governors, in Connecticut and Washington, and 761 women now serving in legislatures representing 10.2 percent of state lawmakers. This is a 50 percent increase in the last decade.

For the 1980 elections, NWPC has set its goal to become a full service campaign organization. Using a team approach in developing regional and state models for endorsing and supporting candidates, Caucus members will compile an in-depth analysis of incumbent vulnerability. The team will also facilitate candidate recruitment, district targeting and refining endorsement procedures.

Raising federal candidate money is a priority for 1980.



Iris Mitgang
Political Action Committee Chair

NWPC Administration

The Administrative Committee is composed of eight officers and seven members elected from the Steering Committee. This group has complete authority and responsibility for the organization when the Steering Committee is not in session.

The Steering Committee is composed of representatives from each state (one representative for the first 30 paid members and one for each additional increment of 100), and from the minority, ethnic and special interest caucuses, chairs of the standing committees, and 12 at-large members elected at each biennial convention.

The Steering Committee has among its duties the establishment of policy between conventions and adoption of the annual budget.

There are ten standing committees.

Programs generally fit under one or more of the standing committees with the committee chair and members responsible for that program. The Planning and Development Committee includes the chairs of all standing committees and the Republican and Democratic Task Force Chairs. This committee helps to coordinate programs and establishes procedures under which the organization operates.

The state and local caucus chairs work as communication links with the members. It is their responsibility to see that all members keep informed about national programs.

The Republican and Democratic Task Forces make possible the bi-partisan aspect of NWPC, particularly in a presidential election year. Each task force works with their own members to plan and strategize for their party's national conventions.

NWPC STANDING COMMITTEE CHAIRS

Planning and Development Committee

Carol Silverthorn, Illinois

Nominating Committee

Marcia Hunt, California

Legislative Committee

Susan McLane, New Hampshire

Marilyn D. Clancy, Illinois

Membership Committee

Peg Cass, Iowa

Public Information Committee

Virginia Karp, Ohio

Marilyn Adams, New York

Finance Committee

Erla Alexander, Georgia

By Laws Committee

Martha Smiley, Texas

ERA Committee

Miriam Dorsey, North Carolina

NWPC ADMINISTRATIVE COMMITTEE

Mildred Jeffrey, Michigan

Rita Triviz, New Mexico

Patricia Bailey, Washington D.C.

Anita Nelam, Washington, D.C.

Iris Mitgang, California

Rose Marie Roybal, New York, NY

Jane Macon, Texas,

Danya Yon, North Carolina

Marilyn Adams, New York

Miriam Dorsey, North Carolina

Sally Lunt, Massachusetts

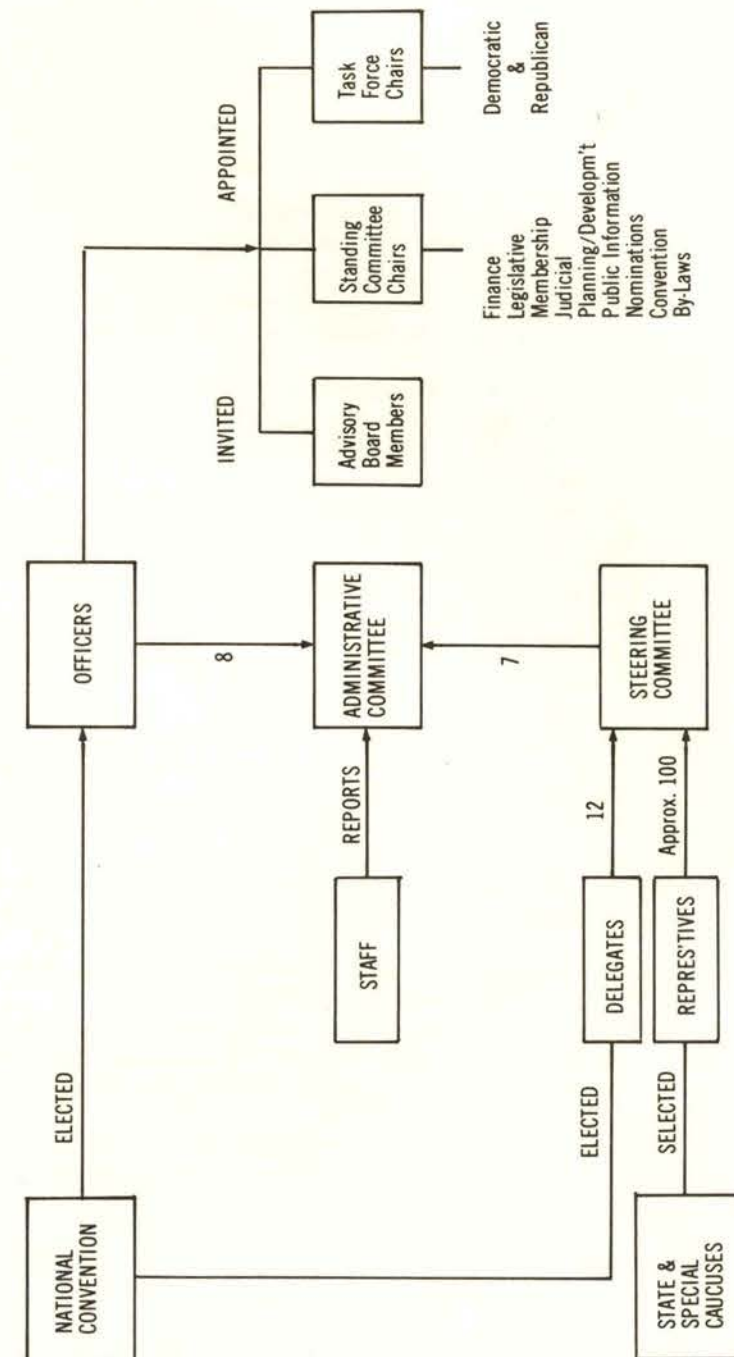
Carol Silverthorn, Illinois

Martha Smiley, Texas

Mary Stanley, California

Nancy Norman-Uhl, Iowa

NWPC Structure





NWPC Staff Report

by Sharon Flynn
Acting Executive Director

Being here in Cincinnati celebrating our eighth birthday brings to mind some poignant moments for many of us. Change comes quickly for groups like the Caucus, and we strive even harder to keep pace.

For a staff that has grown from three to 17... from a third floor walk-up over a fancy restaurant on Pennsylvania Avenue where our neighbors at 1600 often lunched... from recycled furniture and staffers, attempting projects never before tried by them or any one else... we have indeed come a long way...

The 1972 Democratic Convention saw us ensconced in the Betsy Ross Hotel (more often referred to as the Betsy Roach). We sold "Men for Women" buttons to the male Wallace delegates, who claimed they "couldn't argue with that, little lady." We rented a car from an overly friendly Miami dealer who wanted to show us how to drive it... while we were already in the driver's seat. One staffer found a dead fish on her hotel window sill, while several of us took notes for a future travel book on how to eat in Miami on \$5 a day (pre-inflation).

The Republicans put us up in style in '72. A nice hotel... but five to a room. Someone slept on the mimeograph machine. We had buttons made with the feminist symbol in the "o" of Nixon. Several delegates read them upside down and asked who was "Noxin?"

Our first meeting with the women members of the Rules and Platform Committees got off to a slow start... there were no chairs and in 1972, Republicans didn't sit on the floor. But one brave soul, Mary Crisp, (now co-chair of the Republican National Committee) broke the ice, took one of the offered baloney sandwiches and told us her story of how some of the Arizona Republican men tried to keep her from being a delegate... history was made.

In 1973, President Nixon referred to us as "other individuals" when he described the nomination of Margaret Heckler for his vice presidential vacancy.

That was a long time ago. Today, Republicans and Democrats in the Caucus not only sit on the floor together but have traded in the baloney for wine and cheese. We attend each other's fund raisers for feminist candidates, share strategies and plot together on getting power for all women.

Working with the staff these past several months has been an exhilarating experience. You, the members, can be proud of your staff. They are among the best and the brightest and are professional in every sense.

The Caucus is now in an interesting transition period. Losing two valued, long-time staff members, Jane McMichael and Lael Stegall, in the same month was difficult at first. But with its usual resiliency, the organization bounced back, and went on with business as usual.

Under each program area we have listed committee chairs and the staff people assigned to that committee or area. Below, therefore, I am just listing names and titles for your information.

Thank you all for your help.
Happy Birthday to us!

NWPC Staff

National Staff

Executive Director (Acting)	Sharon Flynn
Editor, Women's Political Times	
Executive Assistant	Sylvia Ware
Legislative Director	Ann Kolker
Membership Director	Grace Orlansky
Membership Associate	Paula Pucillo
Development Director	Elois H.J. King
Development Associate	Ann Monnig
Press Coordinator	Ellen Malcolm
Administrative Assistant	Ellen J. Ferebee
Financial Assistant	Gwen Richardson
Receptionist	Roxann Brown
Office Assistant	Cosby Kittrell

Consultants

Fund Raising	Betsy Crone
Women's Political Times, Advertising Sales Manager	Carol Cladouhos
Women's Political Times, Managing Editor	Robbie Snow

Special Convention Staff

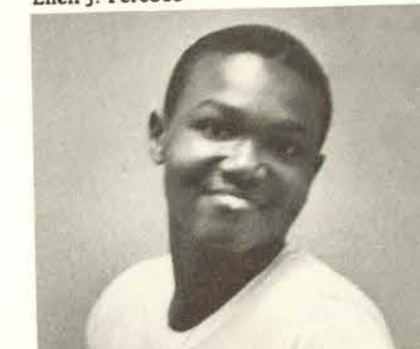
Coordinator	Kris Jacobs
Secretary	Dawn Dilimetin
Interns	Mary Burlington Paula Anderson
Volunteers	Debbie Harding Roberta Weiner Susan Ness



Gwen Richardson



Ellen J. Ferebee



Cosby Kittrell



Roxann Brown



Betsy Crone



Sylvia Ware

Advertisers



**Two jobs,
three careers in
one company.**
Jean Moore, Manager, Major Office Projects
Atlantic Richfield Company

In 1971, I was a secretary. Most working women were. But a group of us wanted that to change. So we wrote a position paper on working women for the management.

Not a negative position, mind you. None of us felt negatively about the company. It was just that women were in the kind of jobs you'd expect women to be in. We wanted a better chance at the jobs that

were traditionally men's. The company created the position of women's coordinator in the Equal Opportunity Program. I must have been one of the more vocal women because I was offered the job. I took it. Quickly. And the next year, they made me manager of the entire Equal Opportunity Program.

In my newest position, as Manager of Major Office Projects, I have

even greater responsibilities. I'm the project manager for a 45-story office building Atlantic Richfield is developing with Rockefeller Center and Wells Fargo Bank.

You know, you just don't see too many women representing a big corporation in developing an \$80 million office building.

But you sure can see a lot more of them than in 1971.

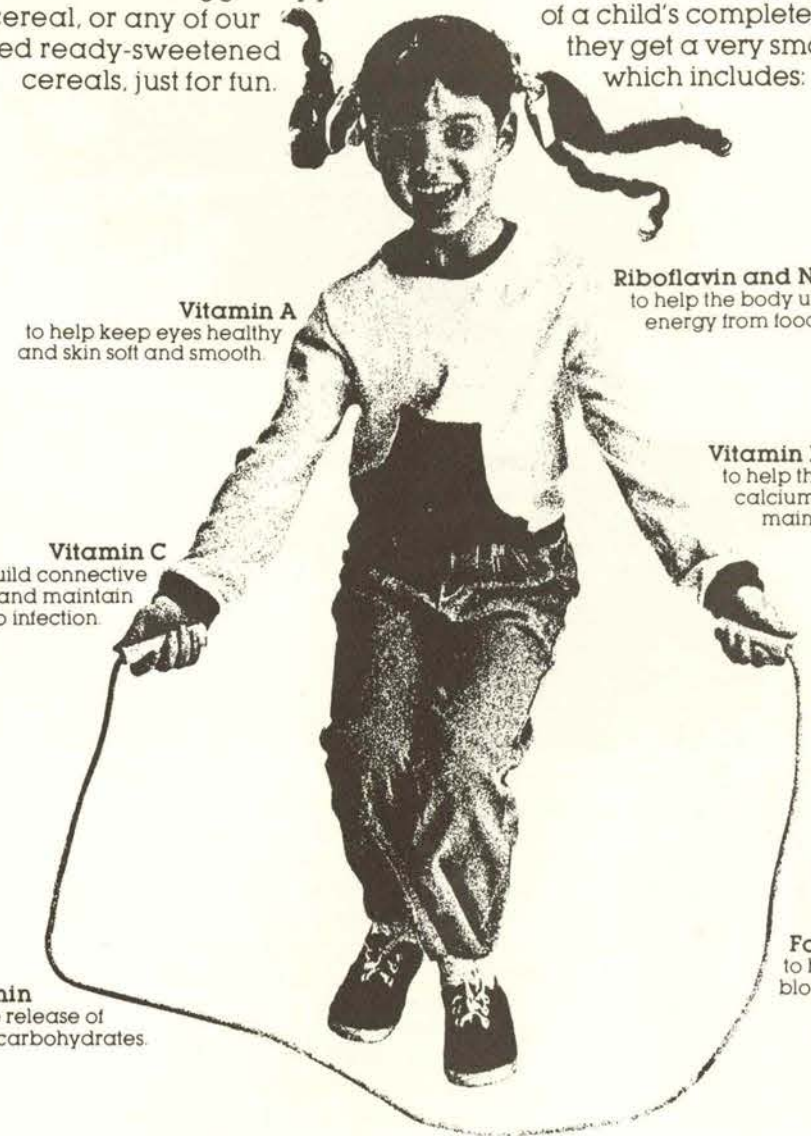
As a company involved in the discovery and development of this nation's natural resources, Atlantic Richfield would like to salute our own most valuable natural resource—our people.



Why we put 8 essential vitamins in Apple Jacks.

We didn't make Kellogg's® Apple Jacks® cereal, or any of our other fortified ready-sweetened cereals, just for fun.

When a typical serving is part of a child's complete breakfast, they get a very smart start, which includes:



Vitamin A
to help keep eyes healthy and skin soft and smooth.

Riboflavin and Niacin
to help the body utilize energy from food.

Vitamin D
to help the body use calcium to build and maintain bones and teeth.

Vitamin C
to help build connective tissue and maintain resistance to infection.

Vitamin B₆
to help the body use protein to build tissues.

Thiamin
to help the release of energy from carbohydrates.

Folic Acid
to help produce red blood cells.

Kellogg's
A very smart start.™

© Kellogg Company © 1979 Kellogg Company



U.S. NAMES RABBIT DIESEL #1 IN ECONOMY.

Now it's official.

According to the official 1979 EPA figures, our Rabbit Diesels get the highest mileage in America: an estimated 40 MPG and 50 MPG estimated highway mileage. (Compare this estimate to the "Estimated MPG" of other cars. Your mileage may vary with speed, weather and trip length. Highway mileage will probably be less. That's also official.)

We could go on and on about all the innovations in the newest Rabbit.

Like the fact that it goes on and on (amazingly!) without ever needing a conventional tune-up. (There are simply no spark plugs, points, condensers, or carburetors to tune.)

There's front-wheel drive for

better tracking.

There's more room for people than 31 other cars you could buy.

And a Rabbit Diesel goes like a bat out of you-know-where. In fact, it set 31 world's records for diesels on a track in Miramas, France.

Come test it for yourself.

For years we've built cars that use very little gas.

Now we've built one that doesn't use any at all.

VOLKSWAGEN DOES IT AGAIN



WHAT YOUR MOTHER NEVER TOLD YOU ABOUT INSURANCE.

Chances are, when your father's insurance agent dropped by, your mother was out in the kitchen fixing coffee and sandwiches. So she probably didn't know much to tell you.

Insurance was one of those things women weren't supposed to concern themselves with. It was "man talk."

Not so anymore.

There's a woman today who should know as much about insurance as a man. She's single. She's married. She's divorced. She's a widow. She's a working woman. With the same kind of responsibilities a man has.

At Nationwide, we can help her meet these responsibilities. With almost every kind of insurance she might need.

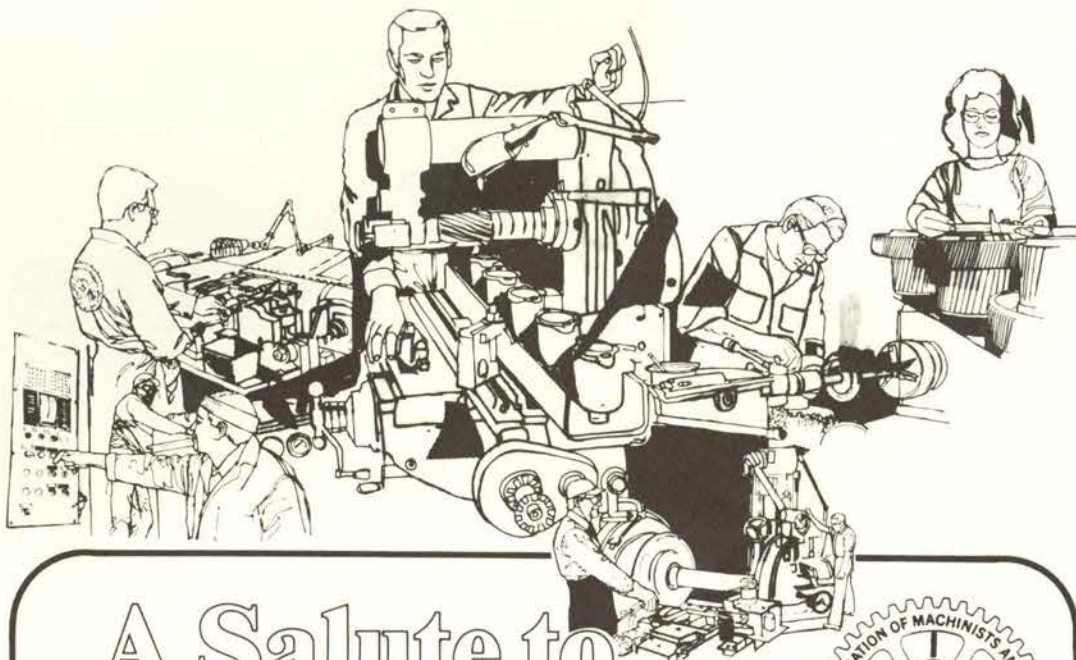
Life insurance and health insurance. Homeowner's or renter's insurance. Auto insurance and business insurance.

Don't be upset with Dad, or Mom. They were only doing what was right back then.

But do call a Nationwide agent. Ask her, or him, to fill you in on what you missed.



Nationwide Mutual Insurance Co. Nationwide Mutual Fire Co. Nationwide Life Insurance Co. Home Office: Columbus, Ohio.
An equal opportunity employer.



A Salute to our friends



National Women's Political Caucus
on the occasion of its Fourth Biennial Convention

from the Union that Brings You the Best

**INTERNATIONAL ASSOCIATION OF MACHINISTS
AND AEROSPACE WORKERS**

William W. Winpisinger
International President

Eugene D. Glover
General Secretary-Treasurer

General Vice Presidents

Mike Rygus
Ottawa, Ont.

Tom Ducey
Chicago, IL

Sal Iaccio
New York, NY

Roe Spencer
Dallas, TX

John Peterpaul
Washington, DC

Stanley Jensen
Portland, OR

Justin Ostro
Long Beach, CA

George Poulin
Washington, DC

Merle E. Pryor, Jr.
Cleveland, OH

WISHING YOU A
SUCCESSFUL
AND
BENEFICIAL
CONVENTION



FROM

**AMOCO
DEALERS AND
JOBBER**

**THROUGHOUT THE
UNITED STATES**

THE NATIONAL WOMEN'S
POLITICAL CAUCUS OF
ALAMEDA COUNTY SUPPORTS
IRIS MITGANG, A MEMBER OF
OUR SISTER CAUCUS FROM
CONTRA COSTA COUNTY, FOR
NATIONAL CHAIRWOMAN.

Please stop and visit our display table.
Hopefully we'll have something that you
need or desire and the proceeds go to a
cause near and dear to you.

Dear Congressman;

**SPEAK OUT FOR ABORTION FUNDING BECAUSE
OTHERS ARE SPEAKING OUT AGAINST IT.**

**Planned Parenthood
Federation of America**
810-7th Avenue,
New York, NY 10019

**with 188 affiliates providing family planning services
throughout the country**

**Your energy needs,
we're working on them.**



Ashland Oil, Inc.-Ashland, Ky. 41101

Welcome to OHIO, NWPC BEST WISHES

from the

Ohio Democratic Party

UNITED STATES SENATOR JOHN H. GLENN
UNITED STATES SENATOR HOWARD METZENBAUM
TREASURER OF STATE GERTRUDE W. DONAHEY
ATTORNEY GENERAL WILLIAM J. BROWN
AUDITOR OF STATE THOMAS E. FERGUSON
SECRETARY OF STATE ANTHONY J. CELEBREZZE, JR.
OHIO HOUSE SPEAKER VERNAL G. RIFFE
OHIO SENATE PRESIDENT OLIVER OCASEK
PAUL TIPPS, CHAIRMAN, OHIO DEMOCRATIC PARTY

AIRSPECT, INC.

627 Doris Avenue
Akron, Ohio 44303

Spasoje Miskovic
General Manager

AKRON, OHIO

SUMMIT COUNTY DEMOCRATIC PARTY

AL TEODOSIO - CHAIRMAN

*Strongly Supports
Women's Active Participation in Politics*

JUDY NICELY Attorney-at-Law

620 Centran Building
Akron, Ohio 44308
Off. - (216) 762-0771
Res. - (216) 836-4774

JEWELRY
SPECIAL WORK
JEWELRY REPAIR



STONE SETTING
MOUNTINGS
ENGRAVING

S & L Jewelry Mfg.
FRANK JONES, OWNER

PHONES
OFFICE 241-7359
HOME 356-3621

ROOM 400
37 W. SEVENTH ST.
CINCINNATI, O. 45202

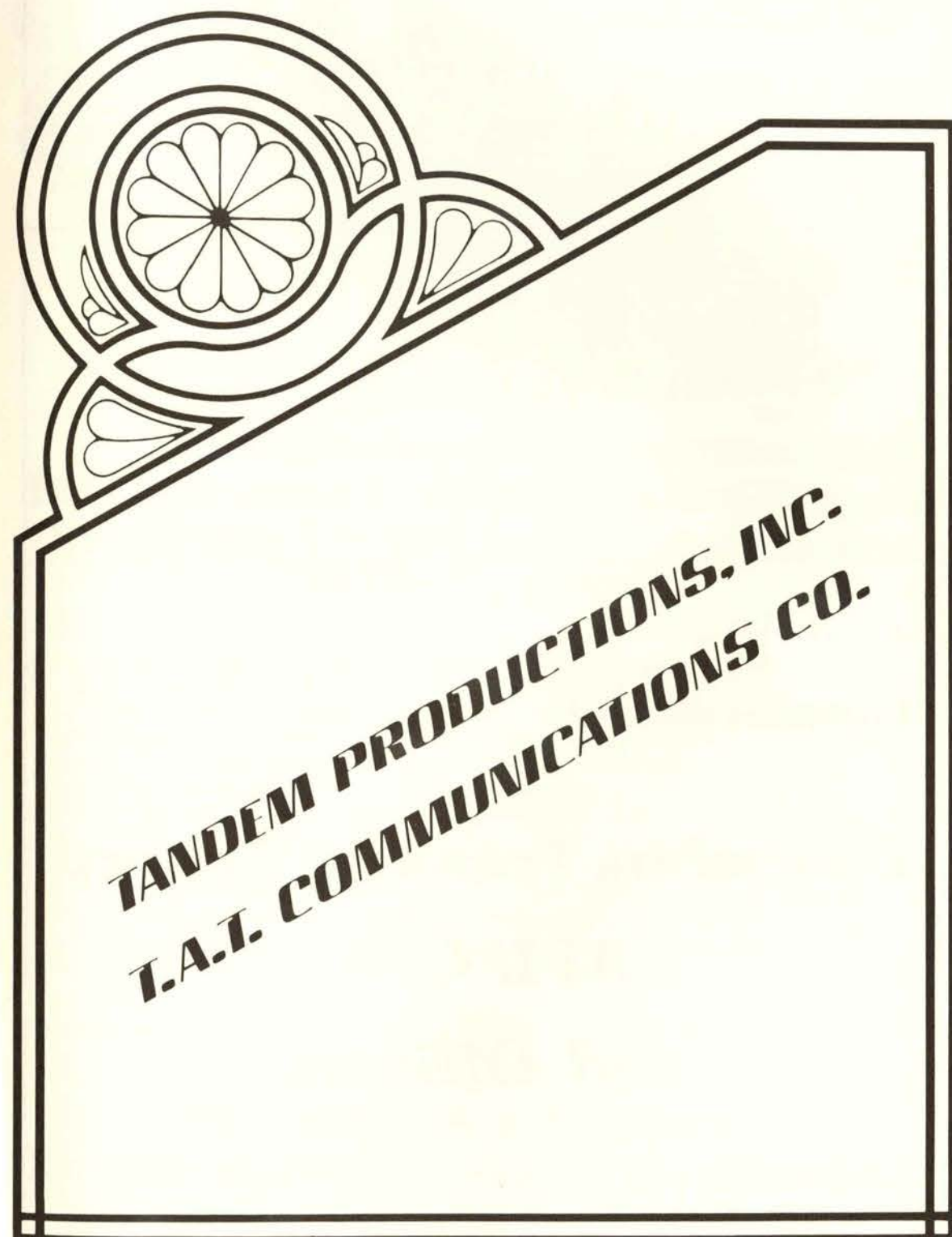
Avis
salutes the
**National Women's
Political Caucus.**

They try harder.



We try harder.

Avis features GM cars and trucks.



*"Where food is an art
and the setting is history"*

**MECKLENBURG
GARDENS**

UNIVERSITY & HIGHLAND/281-5353/

Outdoor dining Six minutes north of downtown



Secretary of State
Anthony J. Celebrezze, Jr.

14th Floor
State Office Tower
Columbus, Ohio 43215

614 / 466-2530



**The Golden
Shear**

120 E. Fourth St.
Formica Arcade
621-2026

15 W. Sixth St.
Terrace Hilton Hotel
421-9677

115 Garfield Place
621-7209



F. C. Machine Tool & Design, Inc.

1474 Main Street
Cuyahoga Falls, Ohio
216/928-9001

Compliments of

Columbus-Franklin County

AFL-CIO

and Officers



Chrysler New Yorker

Neil Armstrong

**"Innovative Engineering Solutions
To Fuel Economy Problems Help Give Chrysler
Corporation The Best Average Fuel Mileage
Of The Big Three."**

"Chrysler's projected 1979 average fuel mileage is 20 estimated miles per gallon—the best of the Big Three. To improve the fuel mileage of family-size cars, for instance, Chrysler Corporation engineers developed a unique automatic transmission lock-up torque converter for most six-cylinder and V-8 engines that completely eliminates fuel-wasting slippage at highway speeds; so you can get economy without giving up an automatic transmission.

"To get good mileage in sporty cars, Chrysler designed two sport coupes that get 25 est. mpg,* and which, aerodynamically, are among the most efficient of all American-built cars.

"To give economy cars power to pass, Chrysler offers the only cars in America with Twin-Stick transmission. Four speeds for economy, four more for extra power.

"Innovative engineering like this is another reason why I'm impressed with the way Chrysler is meeting the driving needs we all have today."



**Chrysler. Dodge. Plymouth.
Chrysler engineering makes the difference.**

*EPA est. mpg. Use this number for comparisons. Your mileage may differ depending on speed, trip length and weather.

Clairol Salutes The National Women's Political Caucus

The Clairol Loving Care Scholarship Program: the only nationwide company-sponsored fund to aid women over 30 achieve career goals through post-secondary education

Entering the Job Market: A Workshop for Women over 30: a nationwide series of workshops to help women re-enter the world of work

Making It in Business: A Seminar for Working Women: a special program to help women who work make the most of their careers



DEMOCRATICALLY SPEAKING...

Women, not men, are the majority in our country. And in a democratic society, majority rules. Right? Wrong.

Women, for too long, have been victims of discrimination in hiring, promotion, wage practices and a host of related areas. AFSCME, proud of its history of combating sex discrimination, is working for passage of the Equal Rights Amendment in the remaining unratified states as well as fighting rescission efforts in those states which have already passed this Constitutional amendment.

Democratically speaking . . . a majority deserves nothing less than full equality under the law.

Jerry Wurf
International President



AFSCME
in the public service

William Lucy
International Secretary-
Treasurer

Elaine Ann Herald
ATTORNEY AT LAW

(412) 471-7703

917 FRICK BLDG.
PITTSBURGH, PA 15219

Women's books, music, t-shirts
THE CRAZY LADIES BOOKSTORE
4168 HAMILTON AVENUE
Hours: M-F 3-8; Sat. 12-5

"Greetings"
FROM THE
**Hamilton County
Democratic Party**

Sid Weil,
co-chairman

John Wiethe
co-chairman

"Best Wishes"
from
**THE CHARTER COMMITTEE
OF
GREATER CINCINNATI**

"America's oldest citizens' party
dedicated to achieving excel-
lence in local government."

Congratulations to the National Women's Political Caucus.

Since your founding, the number of women in the Judiciary, executive branch and elected office at all levels has increased dramatically.

We are proud to be your friends! We join with you in the ongoing task to involve more women in the political process and to ratify the ERA.

Best wishes for a productive Convention.

Douglas A. Fraser
President
International Union, UAW

Odessa Komer
Vice President and Director
Women's Department, UAW

ATTENDING A REDS' GAME AT THE STADIUM?

...after the game stop by

SLEEP-OUT LOUIE'S

Welcome!
National Women's Political Caucus.

LUNCHEON SERVED WEEKDAYS
from 10:30 a.m. till . . .

HAPPY HOUR Monday-Friday 3-7 p.m.

OPEN 7 NITES TILL 2:30

Live Entertainment

721-3636

232 W. 2nd St. (2nd & Plum Sts.)

Vasectomy

What does it mean?



Vasectomy means safe, simple and
affordable birth control for men.

Vasectomy means a man's way for both of you.
For further information call your physician or:



961-3542

Vasectomy Services, Inc.
3332 Vine Street, Cincinnati, Ohio 45220



Kentucky State Parks & Shrines
Super Natural Vacation Sites



Fort Boonesborough

This year beat the energy
crunch. Enjoy Kentucky's
colorful heritage—visit our
state shrines, museums, and
recreational parks.

Tour restored pioneer forts,
Civil War memorials, beautiful
old homes and the exciting
Kentucky Horse Park—all
located within a few hours'
or even a few minutes' drive.

Vacations so enjoyable . . . and
so affordable.



Columbus-Beimont Battlefield

WRITE: TRAVEL, Dept. KPA-P-9, Frankfort, KY 40601

Best Wishes to the 1979
Convention of the National
Women's Political Caucus

from the

**INTERNATIONAL UNION OF
ELECTRICAL, RADIO AND
MACHINE WORKERS (IUE),
AFL-CIO-CLC**

David J. Fitzmaurice, President
George Hutchens, Secretary-Treasurer



MARTHA LAYNE COLLINS
Kentucky's
Democratic Candidate
for
Lt. Governor

*Best wishes for the continued growth of
Kentucky Women's Political Caucus and
Caucuses across the country*

Have a Nice Stay
Compliments of
**Northern Kentucky
Convention and Visitors
Bureau**

**CINCINNATI
AFL—CIO
LABOR COUNCIL**

Oscar G. Lee
President

William P. Sheehan
Executive Secretary-
Treasurer

New opportunities await
Women willing to assume
Political leadership in
Charting new directions

BEST WISHES
FOR A SUCCESSFUL
CONVENTION

GERTRUDE W. DONAHEY
Treasurer of State

"To the achievement of a more
prosperous and democratic America,
with freedom of opportunity guaranteed
to all through law, regardless of
race or creed or sex."



**COALITION
OF LABOR UNION
WOMEN**

In the interests of good government
for all people, greetings to
all participants in the
National Women's Political Caucus.



Pullman Incorporated

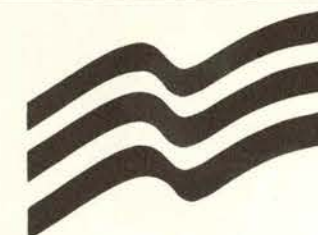


**Attorney General
William J. Brown**



Phone: 261-4212
Foot of Greenup St., Covington, Ky.

Public Leadership, Carlow and You



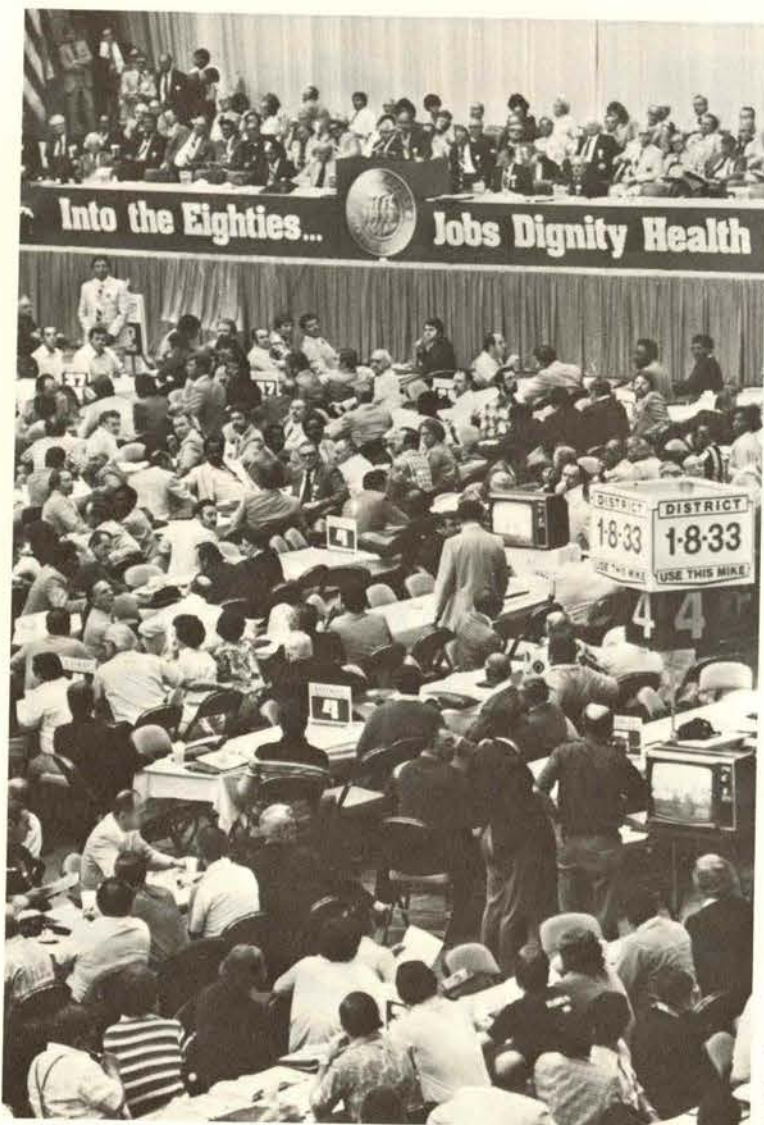
The Public Leadership Education Network is designed to provide innovative programs in political education for women to encourage them to assume political leadership. The long-range goal of the Network is to stimulate interest in the development of similar programs by institutions not already involved in educating women for active participation in public life.

Funded by a two-year grant from the Carnegie Corporation of New York, the Network currently links five women's colleges and two national organizations.

Carlow College, through its Center for Continuing Education, is offering several series of weekend workshops and extended courses focusing on the skills necessary for success in the political arena.

Information about the program may be obtained by calling 412/578-6092 or by writing to the **Center for Continuing Education**, Carlow College, 3333 Fifth Avenue, Pittsburgh, Pennsylvania 15213.

CARLOW COLLEGE



WE'RE MOVING (in more ways than one)

4,227 delegates attended the 1978 convention of the United Steelworkers of America. One of the nation's largest such gatherings, held every second year for a week's duration, it brings hundreds of additional people—delegates' families, staff personnel, union guests—to the convention city.

Our 1980 convention was scheduled to be held in Las Vegas, Nevada. But, in keeping with our position, and as Nevada is among the states which have not ratified the Equal Rights Amendment, we are moving... to Los Angeles, California. We have publicly announced our action and the reason for it.

As a strong supporter of the ERA, which has urged our members to work for its passage at the crucial state level, the USWA also is working for comprehensive child care legislation and to end reproductive and other health hazards at the workplace. The union helped pass the recent pregnancy disability bill and has promoted, in collective bargaining, the concept of affirmative action.

Not only do we encourage the active participation of women in the USWA and the Coalition of Labor Union Women, but we also strongly back efforts to rebuild that broader coalition of conscience so needed to move our country in the proper direction.

To the NWPC—an important part of such a coalition—our very best wishes for a productive convention.

UNITED STEELWORKERS OF AMERICA AFL-CIO-CLC

Lloyd McBride, International President

Lynn Williams
International Secretary

Frank McKee
International Treasurer

Joseph Odorcich
International Vice President
Administration

Leon Lynch
International Vice President
Human Affairs





**Mick Noll's
Covington Haus**
Serving
Great German & American
Food & Drink
Open Daily For Lunch & Dinner
SUNDAY BUFFET BRUNCH
261-6655
100 W. 6th St. • Downtown Covington
Only 5 Minutes Away



There are
lots of towns.
There are
lots of countries.
There is only one
Town & Country.

If you're from the Tri-State area, you probably know all about the Town & Country:

Its heritage: 35 years of smiling faces — on the T & C side and the customer side.

Its fare: prime ribs, aged steaks, Kentucky baked ham, Kentucky fried chicken, frogs legs, seafood of all kinds.

Its credo: courtesy, service, fair prices — and extras like valet parking.

If you're not from the Tri-State area, give us a try. You'll probably be back next time you're within reach.

Town and Country
RESTAURANT

Ft. Wright West Exit off I-75
1622 Dixie Highway/Covington, Kentucky
Reservations: 291-7328

Dear Delegates,

We are three women that founded Cincinnati's first private restaurant, bar, disco; with everyone saying it was the world's worst idea! Well, here we are 16 months later, 3,800 members and we just added an outdoor garden.

We would love to meet you. Bring your convention badge and we will make every effort to see that you have a wonderful evening of conversation, great food, terrific drinks, dancing and backgammon - just plain relaxation.

Mary Sue Morris, Sally Renner, Lib Stone



CORNER OF DELTA & COLUMBIA PARKWAY
15 MINUTES FROM DOWNTOWN
321-4200

THE WOMEN WHO WORK ON
GETTING REVOLUTION INTO
A MONTHLY MAGAZINE...



...SALUTE THE WOMEN
WHO WORK ON GETTING
REVOLUTION
INTO A BALLOT BOX

With our love, support, and best wishes—
THE STAFF OF **Ms.** MAGAZINE

20% COUPON 20%

CASUAL CORNER

522 RACE STREET

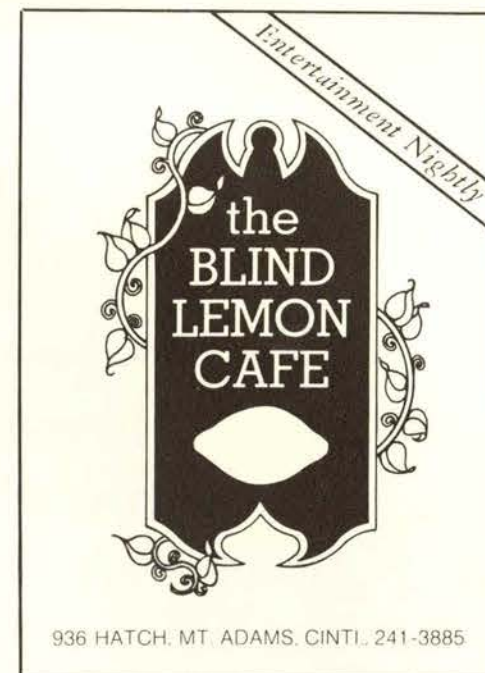
offers

20% off on new
FALL COATS... '79

for the
**Women's
Political Caucus**

thru
July 12, 13, 14

* Bring this coupon for 20% discount. *



**BEST WISHES
FROM
COMMUNICATIONS WORKERS OF AMERICA**

Glenn E. Watts, *President*

Louis B. Knecht, *Secretary-Treasurer*

Gus Cramer, *Executive Vice President*

George M. Miller, *Executive Vice President*

Richard W. Hackler, *Executive Vice President*



1925 K STREET, N.W., WASHINGTON, D.C. 20006

The Ohio Education Association
is honored to extend
greetings and best wishes to the
National Women's Political Caucus
and wishes you continued success.

Your support is requested for the
candidacy of
SANDY E. SCHWARTZ
for the position of At-Large Delegate.

Together We Can!



OEA Women's Caucus
Ohio Education Association
National Education Association

THE "QUEEN CITY" WELCOMES the N.W.P.C.

TECUMSEH X. GRAHAM
Councilman
Cincinnati, Ohio



WELCOME TO THE QUEEN CITY

SENATOR STAN ARONOFF
MINORITY WHIP
OHIO SENATE

Bobbie M. Hall
Fundraising Consultant

500 Clairbrook Ave.,
Columbus, Ohio 43228
Area Code 614-878-1641

Elect
**RAYMOND
BARBER**

*The candidate with a program
to improve Kentucky's educa-
tional opportunities for all of
our students and participating
adults*



RAYMOND BARBER

Paid for by Barber
Campaign Fund for
Superintendent of Public
Instruction John Ramsey,
Treasurer, P.O. Box 917,
Frankfort, Kentucky 40602

For
**SUPERINTENDENT
PUBLIC INSTRUCTION**

Best Wishes For A Successful Convention from The Ohio Republican Party

Saluting
**Republican Women in the
113th Ohio General Assembly**

DONNA POPE-Parma
Minority Whip

HELEN H. FIX-Cincinnati
Ranking Member State Government Committee

MARIE TANSEY-Vermilion
Ranking Member Aging and Housing Subcommittee

EARL T. BARNES
Chairman

MARTHA C. MOORE
Vice-Chairman and National Committeewoman

AVIS, INC.

CANADA DRY CORPORATION

MAX FACTOR & CO.

GLASS CONTAINERS CORPORATION

HALSTON ENTERPRISES, INC.

HUNT-WESSON FOODS, INC.

McCALL PATTERN COMPANY

ORLANE, S.A.

SOMERSET IMPORTERS, LTD.

UNITED CAN COMPANY

NORTON SIMON INC

WORLD HEADQUARTERS 277 PARK AVENUE, NEW YORK, NEW YORK 10017

CONSUMER MARKETING WORLDWIDE

HELPING THE HANDS THAT HEAL

The Johnson & Johnson Family of Companies is a world leader in health care. From the research, development, and quality-assured manufacturing of surgical, pharmaceutical and dental products to well-known consumer products used in the home, our companies are helping to meet the health care needs of people worldwide.

Johnson & Johnson

New Brunswick, N.J. 08903

THE CINCINNATI WOMEN'S POLITICAL CAUCUS

would like to thank the following individuals, companies, groups, and places for making the 1979 convention a huge success:

Dave Kremp Cincinnati Convention
& Visitor's Bureau
John Earls Stouffer's Cincinnati Towers
Guy C. Guckenberger City Council
Mary Ann Klekman The Catered Affair

Federated Dept. Store
The Cincinnati Dancing Pigs
Uncle Steve's Chili
Queen City Chili
Dixie Chili
Gold Star Chili
Acropolis Chili
Chili Town
Cincinnati Chili
Camp Washington Chili
Bob Roncker and Phidippides
Revlon
Blue Cross/Blue Shield of Southwest Ohio
Diet-Pepsi

Make a pet of our owl, lion, mouse or elephant. Each is crafted in 14K yellow gold on an 18 in. chain. 3/4 inch tall. Your choice \$135.



SINCE 1918

116 West Sixth Street
Across from Stouffers

COMPLIMENTS
FROM
FRIENDS

READ REDBOOK, REDBOOK READS YOU

Sam Van Furstenberg[®]

CLERICAL - ADMINISTRATIVE - ENGINEERING - EDP - SALES
ACCOUNTING • STENO • KEY PUNCH

Opportunity
Consultants, inc.


SUITE 208 TRI STATE BLDG.
432 WALNUT STREET
CINCINNATI, OHIO 45202
Phone: (513) 241-8675

JAY RICHARDSON
Administrative Dept.

THE CINCINNATI WOMEN'S POLITICAL CAUCUS

WOULD LIKE TO WELCOME YOU TO

CINCINNATI, OHIO
The "Queen City" Of The West



If you like
pizza you'll love
LaRosa's
Pizzerias
Visit La Rosa's 580
6th. & Walnut Sts.
421-2025
Dining Room or
fast Carry Out

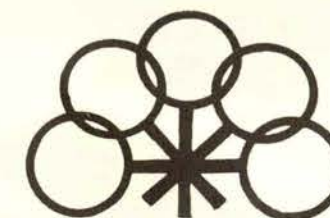
Best Wishes...

from the more than 6,000 employees of
McGraw-Edison Power Systems Division...

...a leading producer of a complete line of products for the
transmission, distribution and control of electricity from
generator step-up transformers to the ultimate user with
14 plants and 61 branch offices throughout the country.

McGRAW-EDISON

Power Systems Division
Post Office Box 2850
Pittsburgh, PA 15230 USA



THE OHIO WOMEN'S POLITICAL CAUCUS

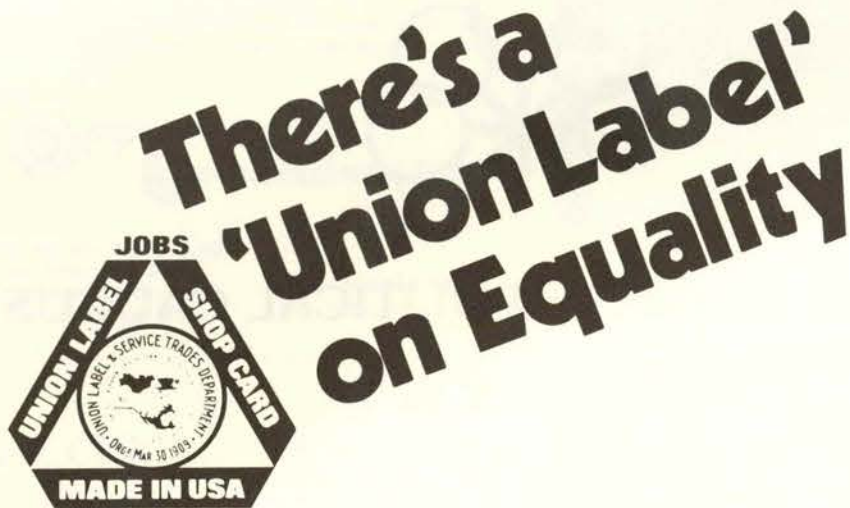
Welcomes You To
CINCINNATI, OHIO

Chair Susan Schnebelt
Vice Chair Nancy Cronin
Treasurer Bobbie Hall
Recorder Roberta Steinbacher
Correspondent Diane Roebuck
At-Large Phyllis Walker Mitchell

Akron Chair Katherine Hinckley
Cincinnati Chair Susan Schnebelt
Cleveland Chair Julie Rak
Columbus Chair Robin O'Keeffe

Steering Committee Representatives

Cincinnati Mary Wells
Cleveland Lori Petterson
Cleveland Jayne Zborowsky
Columbus JoAnne Davidson
Columbus Sandy Schwartz



The Union Label and Service Trades Department, AFL-CIO

815 Sixteenth Street, NW, Washington, D. C. 20006



HARRIET BOGART
V.P. - Media Services



SHARON WILKIN
V.P. - Marketing



Hameroff/Milenthal, Inc.

Advertising · Public Relations

140 E. Town Street,
Columbus, Ohio 43215
(614) 221-7667

**THIS WOMAN WANTS WORK . . .
as NWPC Delegate-at-Large**



Betty Blumberg

Name:
Betty Foster Blumberg

Affiliation:
West Central Indiana Caucus
Terre Haute, Indiana

WPC Experience:
National Advisory Board, 1978-
National Steering Committee, 1975-1979
Member, Republican Women's Task Force, 1973-
President, Indiana Women's Political Caucus, 1977-1979
Vice-President, IWPC, 1975-1977
Chief Republican Lobbyist for E.R.A., 1975-1977
Numerous WPC Committees - state and local
Charter member, West Central Indiana WPC, 1973

Related Experience:
Indiana Commission I.W.Y., 1977
Republican Nominee for State Senate, 1974
Terre Haute Mayor's Advisory Committee, 1968-1971
Numerous civic, political, and educational committees
Educator, art critic, and lecturer

Objective:
To serve enthusiastically as NWPC Delegate-at-Large

Republican National Committee

62 out of 63 isn't bad

There were 63 women newly elected to state legislatures in 1978. Sixty-two of those 63, or 98.4%, have something special in common—they are Republicans. The Republican Party is working hard to get more women elected to public office at all levels. And we have a comprehensive program designed to help women become more politically effective.

We applaud the National Women's Political Caucus for heightening political awareness among women and for bringing more women into the political process. It is long overdue.

*Chairman,
Republican National Committee*

*Chairman,
Republican National Committee*

The Republican National Committee
310 First Street S.E., Washington, D.C. 20003

Authorized and paid for by the Republican National Committee, William J. McManus, Treasurer.

**WTAE-TV
PITTSBURGH, PA.**



**SALUTES
THE
NATIONAL
WOMEN'S
POLITICAL
CAUCUS**

**We're Special
Because You Are!**

You're today's woman, and we're waiting to dress your every mood. At Paul Harris, we're specialists in fashion from head-to-toe. You'll find the clothes and accessories that fit your lifestyle. Make your own fashion statement with Paul Harris.

DOWNTOWN CINCINNATI



**THE AMERICAN COLLEGE
OF NURSE-MIDWIVES**



The professional organization for nurse-midwives in the United States dedicated to "... the improvement of services for mothers and babies, in cooperation with other allied groups ..."

For further information:
American College of Nurse-Midwives
1012 Fourteenth Street, N.W.
Suite 801
Washington, D. C. 20005
(202) 347-5445



While covering the ground-breaking ceremony for the 1904 World's Fair, cub reporter Phmie Sheppard forgot herself and lit up a cigarette.

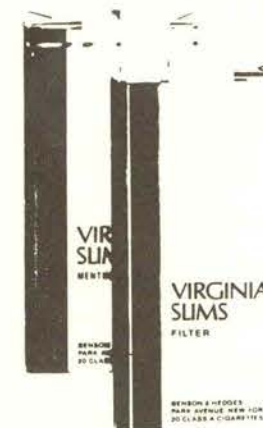


It was her first scoop.

*You've come
a long way, baby.*

**VIRGINIA
SLIMS**

Slimmer than the fat cigarettes men smoke.



15 mg "tar," 0.9 mg nicotine av. per cigarette by FTC Method.

Warning: The Surgeon General Has Determined
That Cigarette Smoking Is Dangerous to Your Health.

Pizgal's
127 West Fourth



The Ultimate
in Good Taste.

Luncheon and Dinner
Monday through Saturday
Reservations 721-1345
Donald G. Whittle, Proprietor

"The underlying premise of
'dress for success' articles is
that, without constant advice
and guidance, we will run amok
and drift into work in ruffles,
bangles and clouds of Jungle
Gardenia . . ."

from "On Dressing for Success"
in
*Confessions of a Late Bloomer,
Or Wear Enough Eye Make-Up
and No One Will Notice Your
Hips*

by P. R. Mecking, edited by K. Donnelly

Available from
Quinn-Gallagher Press
6372 Forward Ave., Pgh., PA 15217
\$4.95, 64 pp., with illustrations

At
JULIA M. WALSH & SONS, INC.

We Specialize In Personalized Investment Services

Portfolio Management
Tax Shelters
Financial Plans

910 17th Street NW
Seventh Floor
Washington DC 20006

JULIA M. WALSH & SONS, INC.

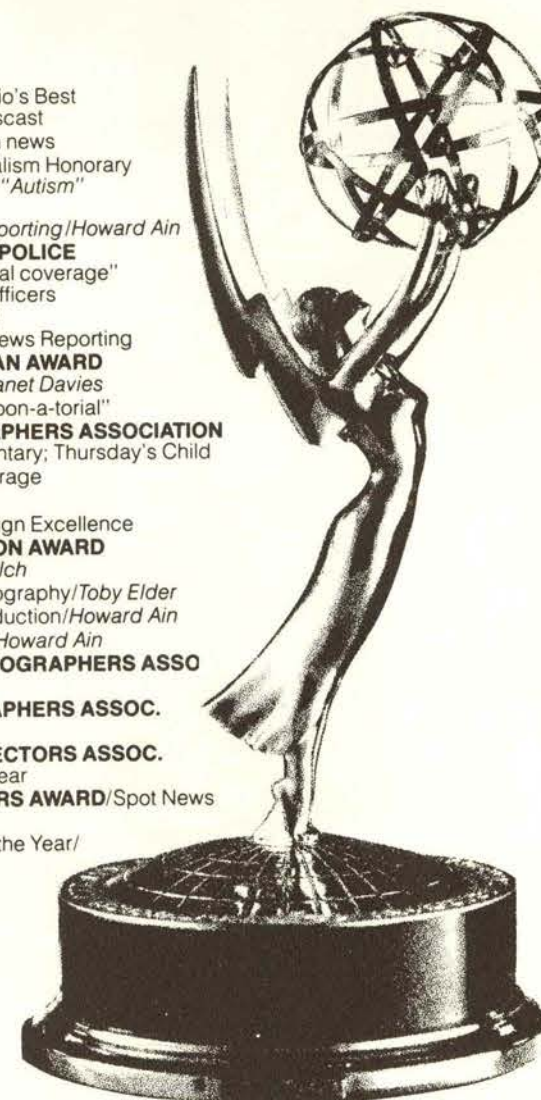
(202) 857-0880

**SOME PEOPLE MAKE THE NEWS
WHEN THEY WIN AWARDS;**

**WE WIN AWARDS
WHEN WE MAKE THE NEWS.**

- 1979 **ASSOCIATED PRESS**/Ohio's Best
Regularly Scheduled Newscast
- 1979 **24 "EMMY"** nominations in news
- 1979 **SIGMA DELTA CHI**/Journalism Honorary
1st place/Documentary on "Autism"
2nd place/Photography
3rd place/Investigative Reporting/Howard Ain
- 1979 **FRATERNAL ORDER OF POLICE**
Recognition of "professional coverage"
in shooting deaths of two officers
- 1979 **OHIO NATIONAL GUARD**
Continued Excellence in News Reporting
- 1979 **KENNEDY HUMANITARIAN AWARD**
Documentary on Autism/Janet Davies
- 1979 **PEABODY AWARD**/"Cartoon-a-torial"
- 1979 **OHIO NEWS PHOTOGRAPHERS ASSOCIATION**
2 Awards/Autism Documentary; Thursday's Child
- 1978 **"EMMY"**/Spot News Coverage
- 1978 **3 "EMMY"s**/The EDGE
- 1978 **DESI**/Silver Award for Design Excellence
- 1977 **CINCINNATI COMPETITION AWARD**
for EDGE music/Oscar Welch
- 1977 **"EMMY"**/Spot News Photography/Toby Elder
- 1977 **"EMMY"**/News Event Production/Howard Ain
- 1977 **"EMMY"**/News Segment/Howard Ain
- 1977 **NATIONAL PRESS PHOTOGRAPHERS ASSO**
Spot News/Toby Elder
- 1977 **OHIO NEWS PHOTOGRAPHERS ASSOC.**
Spot News/Toby Elder
- 1977 **RADIO — TV NEWS DIRECTORS ASSOC.**
Spot News Station of the Year
- 1977 **OHIO AP BROADCASTERS AWARD**/Spot News
- 1977 **ALPHA EPSILON RHO**
Cincinnati Broadcaster of the Year/
Nick Clooney

**EYEWITNESS
12 NEWS abc**
5:30/6 & 11 PM



"Best Wishes"
for a
Successful Convention
and in
All Your
Political Endeavors

Hamilton County Republican Party

George C. Eyrich
John H. Hermanies
co-chairmen



GOLDIE CHU
for Vice-Chair



- "Women from all walks of life need to join together and share..."
- "Politics and Power are important words which influence our everyday lives..."



IMPRESSIVE

Thirty-two stories high and crowned with the magnificent, revolving Top of Crown Lounge and Restaurant. Three other restaurants, lounges...heated pool...superb accommodations for groups up to 1,500.

Stouffer's

CINCINNATI TOWERS

141 W. 6th St. ■ Cincinnati, Ohio 45202 ■ (513) 352-2100

Nobody does it better.

**America's newest union ...
largest AFL-CIO affiliate.**



**Best Wishes to
The
National Women's
Political Caucus
We *NEED* your clout!**

**United Food and Commercial Workers
International Union**

William H. Wynn
International President

Sam J. Talarico
International Secretary-Treasurer



- Abortion • Counseling
- Vasectomy • Ultrasound
- Free Pregnancy Test

Women for
Women
of Cincinnati, Inc.

A Non-Profit Association
411 Oak Street
Cincinnati, Ohio 45219
961-7615

32 Convention Way • Cincinnati, Ohio 45202 • (513) 579-9011

FOOT.LITES
FOOT.LITES
FOOT.LITES

Men's and Women's Fashion Shoes

RUTH A. RYALS
VICE PRESIDENT



PITTSBURGH PENSION PLANNERS, INC.
55 WYOMING AVENUE
PITTSBURGH, PENNSYLVANIA 15211
412-381-7160

CHATHAM
COLLEGE

Chatham College offers personalized education with a liberal arts focus and a range of pre-professional opportunities for women of all ages. Located on 55 acres in Pittsburgh, the Chatham community enjoys easy access to the corporate, cultural, and educational resources of a vibrant city. Through Chatham's quality liberal arts programs, competence and confidence grow together.

Discover • Chatham College
Woodland Road • Pittsburgh, Pa. 15232 • (412) 441-8200



THE BUILDING AND CONSTRUCTION TRADES DEPARTMENT, AFL-CIO

Proudly Salutes . . .

NWPC

*for its support of greater opportunities
for all women.*

*Since 1966, women have accounted for more than
half the growth in union membership.*



The Building and Construction Trades Department, AFL-CIO
815 16th St., N.W., Washington, D.C. 20006
Robert Georgine, President • Joseph Maloney, Secretary-Treasurer

KISTLER ART SUPPLY & FRAMING

Paints / Jewelry / Books / Finest custom framing

VIVIAN C. KISTLER
President

2661 W. Market St.
Akron, Ohio 44315

famous since 1967

GOALS FOR THE GREATER AKRON AREA A CITIZENS LEAGUE

BARBARA HINEY
EXECUTIVE DIRECTOR

ONE CASCADE PLAZA - 8TH FLOOR
AKRON, OHIO 44308
(216) 375-2176

Marin - No. 1 (We tried harder)

RUTHANNE GRIMM

Bus: 513-984-1776
Res. 513-793-0577



CREATIVE PROMOTIONS, INC.
sales aids - premiums
incentive awards programs

9456 Kenwood Rd.

Cinci., Ohio 45242

20 varieties of pancakes plus a wide selection of side orders.

- EGGS
- OMELETTES
- PANCAKES
(20 VARIETIES)
- WAFFLES
- SANDWICHES
- SALADS
- HAND-DIPPED
SUNDAES

OPEN 7 DAYS A WEEK:
6:30 A.M. - 7:00 P.M.



on the Skywalk
between Race and Elm

PERI'S PANCAKES



Twenty million years ago, the site of Marsha's discovery was a seashore.
Now it's 40 miles from the sea, and half a mile down.

Marsha Green took a closer look at a 20-million-year-old seashore and found this new gas field.

For geologist Marsha Green, it was a case of reviewing the evidence just one more time and coming up a winner. After only two years with Gulf Oil, Marsha discovered a new and untapped gas field.

Spotted a trend

Her find was near Victoria, Texas, which 20 million years ago was a seashore, rich in the marine life that creates natural gas.

There were plenty of producing wells in this general area. The drilling record of each one tells a geologist something new about the earth's structure.

Marsha pored over these records. And she began to spot a trend.

Textbook curve

Marsha persuaded Gulf management to drill five exploratory wells. Four were dry. But on one, the instrument that detects natural gas went right off the scale. "A real textbook curve," Marsha says.



Marsha persuaded Gulf management to drill a series of exploratory wells.

Such moments are rare. But Marsha is a dedicated professional. "I like to try to figure out what happened millions of years ago," she says, "and put the whole picture together."

Marsha Green. One of 52,000 Gulf people, meeting the challenge.



**Gulf people:
meeting the challenge.**

Gulf Oil Corporation.

5 STARS Mobil Guide



Maisonette

721-2260

EXHAUSTIVE RESEARCH SUGGEST THAT MEN AND WOMEN POSSESS EQUAL NUMBER OF HANDS

AND HEADS.....



ALL WOMEN OF EVERY RACE & BACKGROUND WITH OUR SENSE OF LIFE CREATING & LIFE SUPPORTING ABILITIES MUST BE ENABLED TO BECOME INVOLVED IN OUR INSTITUTIONS IF WE ARE TO INSURE THE FUTURE OF OUR VERY UNIVERSE. WE MUST LEARN ABOUT OUR INSTITUTIONS AND HELP EACH OTHER BECOME THE CARPENTERS, ELECTRICIANS, PLUMBERS, SOLAR ENERGY EXPERTS INSTEAD OF NUCLEAR ENERGY, AS WELL AS THE ECONOMIST, JUDGES AND LEGISLATORS.

ELECT **JOYCE HARTWELL**
FOR AT-LARGE DELEGATE N.Y. CAUCUS

For

Innovative Caucus Growth / Energetic Fundraising / Successful Caucus Candidates

**VOTE
MARY STANLEY
VICE CHAIR
NWPC**



A Republican Feminist Dynamo
A Grassroots Worker
A Proven Political Pacesetter

Unanimously endorsed by NWPC of California (29 local caucuses)

Paid for by the members of the Fresno County Caucus, NWPC of California

"MAGIC TO DO"

a musical revue
on our intimate cabaret stage



**Cincinnati
Playhouse**
in the park

top quality professional theatre
Box Office: 421-3888

**the old
spaghetti
factory**

**We're right
down the
street!**

Delicious, full-course spaghetti dinner,
salad to dessert, for under \$4.
Forty wines. Mixed drinks. Unique decor.
Fun atmosphere. And, we're just a few
blocks West on 2nd St. FREE PARKING.

HOURS:

Monday thru Thursday: 5-10 P.M.
Friday & Saturday: 5-11 P.M.
Sunday: 4-10 P.M.

417 W. Second St. • 241-3608
The Old Spaghetti Factory International, Inc.
A great idea, with locations nationwide

**JACK
GERSON'S
ALPHA
RESTAURANT**

We cordially extend an invitation
to you for breakfast, brunch,
lunch, and dinner. Featuring
Cincinnati's largest selection of
quality foods. Entertainment
seven nights a week provided by
Kenny Poole, Rick Lisak, and Milt
Goedde.

One block from
the University of
Cincinnati cam-
pus in Clifton
Heights

204 W. McMillan
381-6559

Breakfast, brunch and lunch
from 7:00 a.m. until 2:30 p.m.,
dinner from 5:30 p.m. until 11:00
p.m. Monday thru Friday. Open
9:00 a.m. until 11:00 p.m.
Saturday and Sunday.

BENTLEY'S

**36 WEST FIFTH STREET CINCINNATI, OHIO 45202
513-241-6663**

LUNCH SERVED

10 A.M. - 4 P.M.

DINNER TILL MIDNIGHT

1 A.M. FRIDAY AND SATURDAY



CARRY OUT AVAILABLE

SUNDAY BRUNCH

FROM 11:00 A.M.



HAPPY HOUR

MONDAY THRU FRIDAY

4 P.M. - 7 P.M.

**LIVE ENTERTAINMENT
TUESDAY THRU SATURDAY**

9 - 1



LARGE SCREEN TV



Philip Morris Incorporated salutes the
National Women's Political Caucus and
its many important accomplishments.

We wish you much continued success
and hope that your 1979 Convention provides
the inspiration and motivation to ensure
even greater achievements in the years
ahead.

MARLBORO • BENSON & HEDGES • MERIT • PARLIAMENT
VIRGINIA SLIMS • MILLER HIGH LIFE • LOWENBRAU • 7 UP • DIET 7 UP

To Edna —
in sister hood,
Kia Stein

